



SuperSprings Suspension

- Handmade from micro-cellular polyurethane
- Reduces G-force in your towable by 68%
- Designed to remove sway, hop, & body roll while increasing overall driver control and comfort while towing



Trailer Sumo Springs For Overslung Axles



MSS10740



MSS10747

- Factory spring plate must not be wider than 4¼"
- 5.3"-6.55" required between top of spring tie plate & bottom of frame
- Contact plate for trailers with springs not directly under frame rail
- One kit per axle

ITEM#	GAWR	Capacity	Spring Diameter	Spring height	Price
MSS10740	3-5K	1,400 lbs at 50% compression	3"	4"	\$267.99
MSS10747	5-8K	1,800 lbs at 50% compression	3"	4"	\$294.99
MSS6549	Contact plate for 5-8K overslung configurations				\$74.99

Trailer Sumo Springs For Underslung Axles



MSS10640



MSS10647

- 6"-8.65" required between top of leaf spring and bottom of frame

ITEM#	GAWR	Capacity	Spring Diameter	Spring height	Price
MSS10640	3-5K	1,400 lbs at 50% compression	3"	4"	\$299.99
MSS10647	5-8K	1,800 lbs at 50% compression	3"	4"	\$320.99

- Handmade from micro-cellular polyurethane, reducing rear-end sag
- Increases load carrying ability while stabilizing sway, and softening harsh rebounds
- Sumo Rebel kits are 2 halves combined to make one heavy duty suspension enhancement
- For more details enter your vehicle info at www.superspringsinternational.com



Application Guide (Partial listing)		Capacity at 50% Compression	Sumo	Price	Rebel	Price
Chevy/GMC Pickup (Factory bed only, unless noted)						
19-24	Silverado/ Sierra 1500	1,500	MSS9837	\$300.99		
11-24	Silverado/ Sierra 2500HD/3500HD	5,000			MSS5709	\$641.99
Dodge (Factory bed only, unless noted)						
09-24	RAM 1500	1,500	MSS6249	\$331.99		
03-13	RAM 2500/3500, except 11-13 RAM 3500	5,000			MSS5723	\$641.99
14-24	RAM 2500 4x4	5,000			MSS9639	\$641.99
14-24	RAM 2500/3500	2,800	MSS8427	\$382.99		
11-24	RAM 3500	5,000			MSS5723	\$641.99
Ford (Factory bed only, unless noted)						
19-24	F150	1,500	MSS6433	\$476.99		
17-24	F250, F350 Super Duty	2,800	MSS6416	\$381.99		
17-24	F250, F350 Super Duty, 4x4	5,000			MSS8878	\$641.99



TIMBREN

Looking for a reliable helper spring?

It's time you consider using Timbren SES suspension upgrades. The Aeon® hollow rubber spring is the heart of the Timbren SES suspension upgrade.



Why rubber springs?

In many ways, Aeon® hollow rubber springs are superior to all other suspension helpers. In fact, Aeon® rubber springs are stronger than steel and more reliable than air!

See for yourself how Timbren SES upgrades will give you precisely the capacity and the ride quality that you need to keep your vehicle level and stable.

**No Drill
Installation**

**Lifetime
Warranty**

Application Guide (Partial listing)		2WD				4WD			
		Front	Price	Rear	Price	Front	Price	Rear	Price
Chevy/GMC (Factory bed only, unless noted)									
02-06	Avalanche 1500	MS1463	\$269.95			MS1463	\$269.95		
02-06	Avalanche 2500 (GVW 8600lb)	MS1494	\$269.95			MS1494	\$269.95		
99-06	1500 Silverado, Sierra (Except 4 door for 4WD rear)	MS1494	\$269.95	MS1722	\$269.95	MS1463	\$269.95	MS1722	\$269.95
01-07	1500 HD Silverado, Sierra	MS1494	\$269.95	MS1746	\$269.95	MS1494	\$269.95	MS1746	\$269.95
07-19	1500 Silverado, Sierra (19 Classic Only) (Except XFE series)			MS1722	\$269.95			MS1722	\$269.95
19-24	1500 Silverado, Sierra (New Body Style)			MS1066	\$269.95			MS1066	\$269.95
99-10	2500/2500 HD Silverado, Sierra	MS1494	\$269.95	MS1746	\$269.95	MS1494	\$269.95	MS1746	\$269.95
01-10	3500 Silverado, Sierra	MS1494	\$269.95	MS1784	\$397.95	MS1494	\$269.95	MS1784	\$397.95
11-24	2500/3500 Silverado, Sierra	MS5270	\$269.95	MS5263	\$269.95	MS5270	\$269.95	MS5263	\$269.95
06-10	3500 Cab & Chassis (single rear wheel only)	MS1494	\$269.95	MS1784	\$397.95	MS1494	\$269.95	MS1784	\$397.95
01-10	3500 Cab & Chassis (dual rear wheel only)	MS1494	\$269.95			MS1494	\$269.95		
02-06	Denali, Escalade with rear coil spring					MS1463	\$269.95		
00-06	Yukon, Tahoe with rear coil spring					MS1463	\$269.95		
96-14	Express, Savana 1500 (Except 96-02 for 2WD front & 4WD)	MS1463	\$269.95			MS1463	\$269.95		
96-09	Express, Savana 2500 with 6 bolt wheel, (Except 96-02 for 2WD front & 4WD)	MS1463	\$269.95			MS1463	\$269.95		
Dodge (Factory bed only, unless noted)									
94-01	1500					MS0237	\$269.95	MS0299	\$269.95
02-05	1500			MS0312	\$269.95			MS0312	\$269.95
06-08	1500 Reg & Quad Cab			MS0299	\$269.95			MS0299	\$269.95
06-08	1500 Megacab Only			MS0312	\$269.95	MS0237	\$269.95	MS0312	\$269.95
09-25	1500 Crew & Quad Cab, Except air suspension			MS5133	\$269.95			MS5133	\$269.95
09-24	1500 Regular Cab, Except air suspension			MS4938	\$269.95			MS4938	\$269.95
94-02	2500					MS0237	\$269.95	MS0299	\$269.95
03-13	2500			MS0312	\$269.95	MS0237	\$269.95	MS0312	\$269.95
14-24	2500			MS7182	\$269.95			MS7182	\$269.95
94-13	3500					MS0237	\$269.95		
03-24	3500			MS0343	\$397.95			MS0343	\$397.95
94-99	3500 Cab & chassis	MS0237	\$269.95						
03-13	3500 Cab & chassis	MS0237	\$269.95	MS0343	\$397.95	MS0237	\$269.95	MS0343	\$397.95

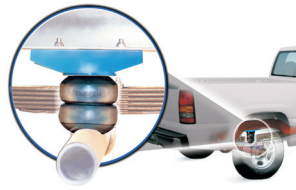
Application guide continued on the next page

There are over four hundred Timbren SES kits designed to fit just about every vehicle – including yours!



Timbren Suspension

TIMBREN



**No Drill
Installation**

**Lifetime
Warranty**

Application Guide (Partial listing)		2WD				4WD			
		Front	Price	Rear	Price	Front	Price	Rear	Price
Ford (Factory bed only, unless noted)									
70-96	F-150			MS0978	\$269.95				
09-14	F-150							MS4921	\$269.95
15-24	F-150			MS8257	\$269.95			MS8257	\$269.95
70-98	F-250 (except 97-98 light duty)			MS0978	\$269.95				
99-00	F-250 Super Duty			MS0978	\$269.95			MS0978	\$269.95
05-10	F-250 Super Duty			MS1005	\$269.95	MS0749	\$269.95	MS1005	\$269.95
11-16	F-250 Super Duty (11-18 for MS0749)			MS5416	\$269.95	MS0749	\$269.95	MS5416	\$269.95
17-24	F-250 Super Duty			MS8653	\$269.95			MS8653	\$269.95
05-16	F-350 Super Duty			MS1036	\$397.95	MS0749	\$269.95	MS1036	\$397.95
17-24	F-350 Super Duty			MS8660	\$397.95	MS0749	\$269.95	MS8660	\$397.95
70-04	F-350 Cab & Chassis			MS1036	\$397.95			MS1036	\$397.95
05-09	F-350 Cab & chassis	MS0749	\$269.95			MS0749	\$269.95		
14-24	Transit 350 & 350HD			MS7274	\$397.95			MS7274	\$397.95
Toyota									
05-23	Tacoma w/ 4-leaf OEM rear suspension			MS3511	\$269.95			MS3511	\$269.95
05-16	Tacoma Pre-Runner			MS3511	\$269.95				
00-21	Tundra			MS3511	\$269.95			MS3511	\$269.95

Zero Maintenance!

Enjoy maintenance-free & trouble-free driving. Spend less time in the repair shop and more time on the job. Timbren SES upgrades not only install easily; they require no upkeep. There are no metal leaf springs to sag or air springs to leak. Experience for yourself the benefits of increased stability and superior ride quality with Timbren SES upgrades.

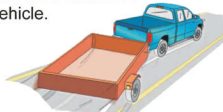
90-day Satisfaction Guarantee



SOLVING PROBLEMS

Trailer Sway

Control Trailer Sway - a condition which sometimes occurs with unbalanced loads, in crosswinds or when passing heavy trucks. **Timbren SES** stabilizes your vehicle.



Rough Ride

Improve the Ride by allowing the Aeon® hollow rubber springs to absorb road shocks and bumps. Towing a trailer doesn't have to mean poor ride quality.



Suspension Sag

Eliminate Suspension Sag when towing a heavy trailer. **Timbren SES** extends the life of your suspension and helps to avoid bottoming out.



Body Roll

Control Body Roll during cornering with powerful progressive rate rubber springs which resist lean and enhance vehicle stability.



Firestone Air Bags



+ EASY INSTALL

+ MORE COMFORTABLE RIDE

+ MORE LEVEL LOADS

+ LESS BOTTOMING OUT



Firestone Ride-Rite™ Air Suspension Systems give your vehicle the support it needs for you to tow with **comfort, confidence, and control.**

- Increase vehicle stability
- Reduce suspension fatigue
- 3200-7500 lb load leveling
- *No Drill* installation for many kits
- Limited Lifetime Warranty!



Kits include: brackets, air springs, hardware, air line, and separate valves for manual inflation. Lifted or lowered vehicles require additional items.

Application Guide (Partial listing)		ITEM#	Price	Footnotes
Chevy/GMC (Factory bed only, unless noted)				
73-87	C & R10/20/30, C&R 3500, 2 WD	MSA2071	\$470.95	C
99-07	1500 Silverado/Sierra, 07 Classic only, not HD	MSA2320	\$538.95	B
07-19	1500 Silverado/Sierra (07 New Body Style) (19 Classic Only) (Not High Country or Denali)	MSA2430	\$538.95	ND
01-10	2500HD/3500 Silverado/Sierra	MSA2250	\$516.95	H,ND
11-24	2500/3500 HD Silverado/Sierra	MSA2613	\$637.95	H,ND
01-10	C2500HD/C3500HD Cab & Chassis	MSA2249	\$538.95	
12-24	3500 HD Cab & Chassis	MSA2715	\$726.95	ND
Dodge (Factory bed only, unless noted)				
69-02	1500/2500/3500, (Except '02 1500)	MSA2071	\$470.95	C
06-08	1500 Megacab	MSA2299	\$538.95	H, ND
09-18	1500 except Power Ram or Rebel (1K rated Coil-Rite™ air spring)	MSA4185	\$179.95	H, ND
03-13	2500/3500 (except '13 3500)	MSA2299	\$538.95	H,ND
14-24	2500 Ram, no factory air suspension	MSA2598	\$538.95	H,ND
13-24	3500 Ram (4x4 only, no factory air suspension)	MSA2615	\$538.95	H,ND
07-24	3500 Cab & Chassis	MSA2478	\$538.95	E
07-24	4500/5500 Cab & Chassis (requires 2" clearance above frame)	MSA2404	\$695.95	G
Ford (Factory bed only, unless noted)				
69-96	F100 & 150	MSA2071	\$470.95	C
97-04	F150 ('04 F-150 Heritage only)	MSA2320	\$538.95	B
09-14	F150 Except Raptor & FX2	MSA2525	\$584.95	E,ND
15-24	F150 Except Raptor & CCD suspension	MSA2582	\$538.95	E,ND
69-96	F250	MSA2071	\$470.95	C
97-04	F250 under 8500 GVWR	MSA2320	\$538.95	B
97-98	F250 over 8500 GVWR	MSA2071	\$470.95	C
99-04	F250 over 8500 GVWR	MSA2550	\$599.95	H,ND
05-07	F250/350 (4WD only)	MSA2400	\$536.95	H,ND
99-04	F350 (Except 2WD V10 gas w/extended cab & 8' bed)	MSA2550	\$599.95	H,ND
08-10	F250/350	MSA2550	\$599.95	H,ND
11-16	F250/350/450 (Excludes 15-16 F450) (Excludes F350 2WD V10 gas w/extended cab and 8' bed)	MSA2597	\$608.95	H,ND
17-22	F250/350 2WD	MSA2600	\$632.95	H,C,ND
17-24	F250,350,F450 4WD	MSA2625	\$575.95	H,ND
99-24	F350,450 Cab & Chassis	MSA2176	\$538.95	C
99-24	F550 Cab & Chassis (requires 2" clearance above frame)	MSA2404	\$695.95	G
07-21	Toyota Tundra	MSA2445	\$538.95	H,ND

Footnotes:

- B- 6" Minimum from tire to frame clearance required
- C- 7.5" Minimum from tire to frame clearance required
- D- Use Spacer Kit MSA2366 for Heavy Duty models
- E- 8" Minimum clearance from tire to frame required
- G- 9.5" minimum clearance from tire to frame required
- H- No interference with most In-bed hitches
- ND- No drill installation



Air System



- Standard duty air compressor
- Single white face gauge
- Inflates two bags equally
- Quick, easy adjustment with in-cab controls

MSA2158 Single Path Air Compressor System **\$402.95**

Dual Path Air System



- Heavy Duty air compressor
- Dual white face gauge
- Inflates two bags individually
- Provides front-to-rear or side-to-side leveling with electronic switch

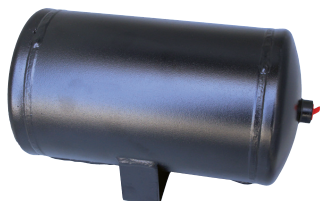
MSA2219 Dual Path Air Compressor System **\$747.95**

Replacement Parts



- MSA2229 1981 MSA9039
- MSA2229/9039: replacement switches for MSA2097/2158 kits
 - MSA2229** Replacement white gauge and switch **\$155.95**
 - MSA9039** Replacement paddle switch only **\$70.95**
 - MSA9401** Sealed air pressure switch, 90-120 PSI **\$71.95**
 - MSA0938** ¼" red air line tubing, 18 feet **\$11.95**

Firestone Air Tank



- Coated internally and externally for maximum corrosion resistance
 - Up to 150 psi.
- MSA9125** 1 Gallon Air Tank **\$85.95**

Heavy Duty Air System



- Heavy duty air compressor
- Single white face gauge
- Inflates two bags equally
- Air compressor systems give you quick, easy adjustment for your ride-rite airbags with in-cab controls to adjust air pressure for various load and road conditions. Inflates both bags equally.

MSA2097 Single Gauge HD Air Compressor System **\$594.95**

Wireless Air Command Systems

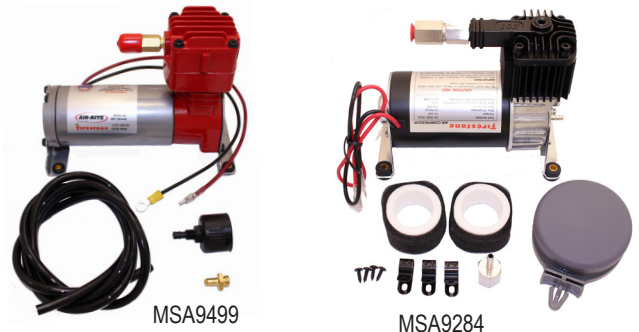


- Standard duty air compressor
- Wireless hand held remote & mobile app for convenient operation in or out of truck

MSA2638 Single path, standard duty compressor **\$650.00**

MSA2632 Dual path, standard duty compressor **\$965.00**

Replacement Air Compressors



- Coated internally and externally for maximum corrosion resistance
- MSA9284** Standard Air Compressor, 130PSI, ½" NPT **\$187.95**
- MSA9499** Heavy Duty Air Compressor, 150PSI, ¼" NPT **\$362.95**

Air Lift Air Bags



60 DAY NO QUESTIONS ASKED, MONEY BACK GUARANTEE

LIFETIME WARRANTY

Air spring kits available for more than 500+ different vehicles.

LoadLIFTER 5000™

- Without internal jounce bumper
- Up to 5,000 lb of load-leveling capacity.
- Built like a tire: reinforced with 2-ply fabric for maximum strength



LoadLIFTER 5000™ ULTIMATE

- All the benefits of LoadLifter 5000™
- Internal jounce bumper absorbs shock.
- Safely run with zero air pressure.

cutaway view of jounce bumper



LoadLIFTER 7500XL™ ULTIMATE

- Internal jounce bumper absorbs shock.
- Safely run with zero air pressure.
- Up to 7,500 lb of load-leveling capacity
- Big 7" double-convoluted-bellow air springs
- Up to 20% more volume than LoadLifter 5000™

Application Guide (Partial listing)		5000™ ITEM#	Price	5000 Ultimate™ ITEM#	Price	7500XL™ Ultimate ITEM#	Price	Foot-notes
Chevy/GMC Pickup (Factory bed only, unless noted)								
99-07	1500 Classic, 2K rated for 1/2 ton vehicle, 1500 HD, 01-05	MSL59501	\$410.95					B
07-19	1500 ('19 Legacy only) (No MagneRide)	MSL57204	\$463.95					
19-24	1500 ('19 NBS) (Except Trail Boss or AT4) (No Adaptive Ride)	MSL57288	\$463.95					
01-10	2500HD/3500, Except QuadraSteer	MSL57275	\$450.95	MSL88275	\$596.95	MSL57575	\$684.95	ND
11-19	2500HD/3500	MSL57338	\$561.95	MSL88338	\$702.95	MSL57538	\$807.95	ND
20-24	2500HD/3500	MSL57341	\$561.95	MSL88341	\$702.95	MSL57541	\$807.95	ND
11-15	3500 Cab & Chassis			MSL88339	\$617.95			
Chevy/GMC Van								
96-23	Express/Savanna G-2500HD/G-3500 passenger, boxed frame only	MSL57205	\$463.95					
Dodge (Factory bed only, unless noted)								
94-02	1500/2500/3500 (except 02 1500)	MSL57215	\$463.95	MSL88215	\$596.95			E
11-24	1500 (19-23 Classic only) Except factory air suspension, 2.1K rated, installs inside coil spring	MSL60818HD	\$204.95					ND
11-24	1500 (19-23 Classic only) Except factory air suspension, 5K rated, installs beside coil spring	MSL57365	\$481.95					D,ND
19-25	1500 (Except 19-24 Classic) Except factory air suspension & TRX	MSL57375	\$494.95	MSL88375	\$676.95			ND
03-13	2500/3500 4WD	MSL57295	\$463.95	MSL88295	\$595.95	MSL57595	\$684.95	ND
14-24	2500 2 & 4WD	MSL57289	\$463.95	MSL88289	\$595.95	MSL57589	\$751.95	ND
14-18	3500 4WD Except factory air suspension	MSL57295	\$463.95	MSL88295	\$595.95	MSL57595	\$684.95	ND
19-24	3500 Except factory air suspension	MSL57231	\$463.95	MSL88231	\$596.95	MSL57531	\$684.95	ND
07-24	4500/5500 Cab & Chassis			MSL88255	\$595.95			ND
Ford (Factory bed only, unless noted)								
75-04	F-150, 2K rated for 1/2 ton vehicle	MSL59501	\$410.95					
04-14	F-150 4WD (Except Heritage style) (Except Raptor)	MSL57200	\$463.95					
15-20	F-150 4WD	MSL57385	\$481.95	MSL88385	\$617.95			ND
21-24	F-150 (Except PowerBoost)	MSL57355	\$481.95	MSL88355	\$676.95			ND
70-98	F-250/350 SD	MSL57215	\$463.95	MSL88215	\$596.95			E
99-04	F-250/350, 4WD			MSL88390	\$617.95			ND,F
05-10	F-250/350, 4WD	MSL57398	\$494.95	MSL88398	\$617.95			ND
11-16	F-250/350, 4WD	MSL57396	\$494.95	MSL88396	\$617.95	MSL57596	\$798.95	ND
17-19	F-250/350/450, 4WD	MSL57399	\$494.95	MSL88399	\$617.95	MSL57577	\$781.95	ND
20-22	F-250/350, 4WD, single rear wheel	MSL57352	\$495.95	MSL88352	\$617.95	MSL57552	\$781.95	ND
20-22	F-350, 4WD, dual wheel only	MSL57350	\$495.95	MSL88350	\$617.95	MSL57550	\$781.95	ND
23-24	F250,350, 4WD, single rear wheel	MSL57354	\$495.95	MSL88354	\$617.95	MSL57554	\$807.29	ND
23-24	F250,350, 4WD, dual wheel only	MSL57580	\$781.95	MSL88380	\$617.95			ND
11-14	F-450 4WD	MSL57396	\$494.95	MSL88396	\$617.95			ND
15-16	F-450, 2 & 4WD			MSL88349	\$617.95			ND
17-24	F350 Cab & Chassis, requires 7.5" tire to frame clearance	MSL57343	\$495.95					
94-23	F450/550 Cab & Chassis	MSL57345	\$481.95					F
07-21	Toyota Tundra			MSL88299	\$500.95			ND

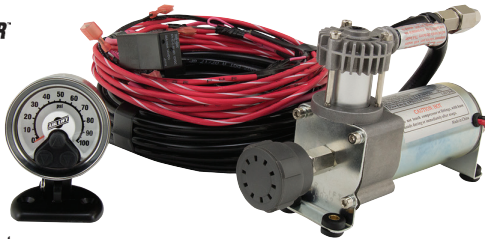
Footnotes: **B**- 6" from tire to frame required **E**- 8" from tire to frame required **D**- 8 1/2" from tire to frame required **F**- 9" from tire to frame required **ND**- No drill install
 Note: Some Airlift mounting brackets may interfere w/ in bed fifth wheels and hitches. Please refer to airliftcompany.com for your specific application.

Single Path Air System



- 2 year warranty
 - Single path, inflates two air springs equally
- MSL25592** Single path, standard compressor kit **\$322.95**

Heavy Duty Air System



- 2 year warranty
 - Single path, inflates two air springs equally
 - Heavy duty compressor for faster inflation and quieter operation
- MSL25854** Single path, heavy duty compressor kit **\$390.95**

Lock-N-Lift Spring Spacer



- Limited lifetime warranty
 - Works with 5000 series and 7500XL series
- MSL52420** Universal 2" lift spacer kit **\$104.95**

Wireless Air Kits



- 2 year warranty
 - MSL74100EZ: Dual path, inflates two air springs individually
 - MSL25981EZ: Single path, inflates two air springs equally
 - Heavy duty compressor for faster inflation and quieter operation
 - Wireless hand-held unit & mobile app for convenient operation in or out of truck
 - 2 gallon air tank and coiled fill hose included
 - EZ Mount manifold & solenoid installed on a convenient mounting bracket. Simple U-bolt installation - No Drill!
- MSL25981EZ** Single path, Heavy Duty compressor kit, EZ Mount and air tank **\$1195.95**
- MSL74100EZ** Dual path, Heavy Duty compressor kit, EZ Mount and air tank **\$1215.95**

Single Path Wireless System



MSL25980



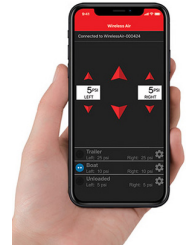
MSL25980EZ

- 2 year warranty
 - Single path, inflates two air springs equally
 - Wireless hand-held unit & mobile app for convenient operation in or out of truck
 - Improved manifold with better seals & sensors
 - MSL25980EZ has heavy duty compressor & manifold installed on a convenient mounting bracket. Simple U-bolt installation - No Drill!
- MSL25980** Single path, standard compressor kit **\$525.95**
- MSL25980EZ** Single path, HD compressor kit, EZ Mount **\$675.95**

Dual Path Wireless System



MSL74000



MSL74000EZ

- 2 year warranty
 - Dual path, inflates two air springs individually
 - Heavy duty compressor for faster inflation and quieter operation
 - Wireless hand-held unit & mobile app for convenient operation in or out of truck
 - Advanced diagnostics with low-pressure monitor and leak detection
 - MSL74000EZ has compressor & manifold installed on a convenient mounting bracket. Simple U-bolt installation - No Drill!
- MSL74000** Dual path, wireless compressor kit **\$665.95**
- MSL74000EZ** Dual path, wireless compressor kit, EZ Mount **\$799.95**



PROSeries



Go Pro

- Available only through authorized Airlift installers.
- Not available through eCommerce.
- Up to 5,000 lbs. load-leveling capacity
- Upgraded anodized end caps

Application Guide <small>(Partial listing)</small>		PROSeries ITEM#	Footnotes
Chevy/GMC Pickup (Factory bed only, unless noted)			
01-10	2500HD/3500	MSL94275	ND
11-19	2500HD/3500HD	MSL93338	ND
Dodge (Factory bed only, unless noted)			
03-13	2500/3500 4WD	MSL93295	ND
14-2	2500 2 & 4WD	MSL93289	ND
14-18	3500 4WD	MSL93295	ND
Ford (Factory bed only, unless noted)			
11-16	F250/350/450 (Except 15-16 F450) 4WD	MSL93396	ND
17-19	F-250/350/450, 4WD	MSL93399	ND
20-22	F-250/350, 4WD, single rear wheel	MSL93352	ND
20-22	F-350, 4WD, dual wheel only, except Tremor or FX4	MSL93350	ND
23-24	F250,350, 4WD, single rear wheel	MSL93354	ND
17-24	F350 Cab & Chassis, requires 7.5" tire to frame clearance	MSL93343	

Please call for pricing.

ND- No drill installation

Note: Some Airlift mounting brackets may interfere w/ in bed fifth wheels and hitches. Please refer to airliftcompany.com for your specific application.

