

## Tubular Ball Mounts



- 1" ball hole
- Fits 2" standard receivers
- Uses 5/8" pin & clip (not included)
- Tongue Weight is 10% of capacity
- Length is measured from pin hole to ball hole
- Heavy duty Black Powder Coated tubular steel

### 2" Drop Tubular Ball Mounts

HMT202	2" drop, 7 1/4" long	7,500 lb capacity	\$19.95
HMT202L	2" drop, 10 1/2" long	7,500 lb capacity	\$22.95
HMT202XL	2" drop, 12 1/2" long	7,500 lb capacity	\$36.95

### 4" Drop Tubular Ball Mounts

HMT204	4" drop, 8 3/8" long	7,500 lb capacity	\$23.95
HMT204L	4" drop, 10 3/8" long	7,500 lb capacity	\$25.95
HMT204XL	4" drop, 12 3/8" long	7,500 lb capacity	\$41.95

### 6" Drop Tubular Ball Mounts

HMT206	6" drop, 9 3/8" long	7,500 drop, 6,000 rise	\$31.95
HMT206L	6" drop, 11 3/8" long	7,500 drop, 6,000 rise	\$35.95
HMT206XL	6" drop, 14 3/8" long	7,500 drop, 6,000 rise	\$48.95

### 8-10" Drop Tubular Ball Mounts

HMT208	8" drop, 11 3/4" long	5,000 drop, 3,500 rise	\$40.95
HMT208L	8" drop, 13 3/4" long	5,000 drop, 3,500 rise	\$46.95
HMT210	10" drop, 12 3/4" long	5,000 drop, 3,500 rise	\$52.95
HMT210L	10" drop, 14" long	5,000 drop, 3,500 rise	\$69.95

## 10K Tubular Ball Mounts



- 1 1/4" ball hole
- Fits 2" standard receivers
- Uses 5/8" pin & clip (not included)

HMT232	2" drop, 8 1/2" long	10,000 lb capacity	\$45.95
HMT234	4" drop, 9" long	10,000 lb capacity	\$57.95
HMT236	6" drop, 9" long	10,000 lb capacity (drop only)	\$63.95

## Forged Aluminum Ball Mount



- 1" ball hole
- Fits 2" standard receivers
- Uses 5/8" pin & clip (not included)
- Solid aluminum shank
- See page 14 for Stainless Steel hitch balls with 1" shank

HMSA201	2" drop, 8 1/2" long, 8,000 lb capacity	\$65.95
---------	---	---------

## Loaded Ball Mounts



- Fits 2" standard receivers
- Includes factory torqued 2" trailer ball & 5/8" pin & clip

HMT272	2" drop, 7 3/8" length	7,500/750	\$38.95
HMT274	4" drop, 8 1/2" length	7,500/750	\$38.95

## Solid Steel Ball Mounts



- 1 1/4" ball hole
- Fits standard 2" receivers
- Uses 5/8" pin & clip (not included)
- Length is measured from pin hole to ball hole
- Black powder coated (except HMS208)

### 2" Drop Solid Steel Ball Mounts

HMS202	2" drop, 8 1/2" long	16,000 lb capacity	\$61.95
HMS202L	2" drop, 10 1/4" long	16,000 lb capacity	\$67.95

### 4" Drop Solid Steel Ball Mounts

HMS204	4" drop, 9 3/8" long	16,000 lb capacity	\$69.95
HMS204L	4" drop, 11 3/8" long	16,000 lb capacity	\$77.95

### 6" Drop Solid Steel Ball Mount

HMS206	6" drop, 10 3/4" long	16,000 lb capacity	\$82.95
--------	-----------------------	--------------------	---------

### 8" Drop Solid Steel Ball Mount

HMS208	8" drop, 10" long	12,000 lb capacity	\$95.95
--------	-------------------	--------------------	---------

## Forged Ball Mounts



- 1 1/4" ball hole
- Fits standard 2" receivers
- Uses 5/8" pin & clip (not included)
- Length is measured from pin hole to ball hole

HMS902	2" drop, 7 3/8" long	20,000/2,000 lb capacity	\$40.95
HMS922	2" drop, 8 1/2" long	17,000/2,550 lb capacity	\$79.95
HMS904	4" drop, 7 3/8" long	20,000/2,000 lb capacity	\$48.95
HMS924	4" drop, 8 1/2" long	17,000/2,550 lb capacity	\$88.95
HMS906	6" drop, 9 3/8" long	17,000/1,700 lb capacity	\$61.95
HMS926	6" drop, 9 1/2" long	17,000/2,550 lb capacity	\$101.95

## 2" Ball Mounts



### Triple Tow Ball Mounts



- 1 $\frac{1}{8}$ ", 2", and 2 $\frac{5}{16}$ " hitch balls
- Fits 2" standard receivers
- Uses  $\frac{5}{8}$ " pin & clip (not included).
- HMT20TL has a tubular shank
- HMS20T0 has chrome balls and a 7,500 lb cast steel pintle jaw
- HMS20TP has a cushioned draw bar to give you smoother towing

ITEM#	Ball Type	2 $\frac{5}{16}$ "	2"	1 $\frac{1}{8}$ "	Price
HMT20TL	Black	10,000	7,500	5,000	\$68.95
HMS20TL	Black	10,000	7,500	5,000	\$73.95
HMS20TH	Black	16,000	10,000	2,000	\$104.95
HMS20TC	Chrome	10,000	7,500	5,000	\$89.95
HMS20T0	Pintle	10,000	7,500	6,000	\$127.95
HMS20TP	Cushion	10,000	10,000	2,000	\$157.95

### Double Tow Ball Mounts



- Fits 2" standard receivers
- Uses  $\frac{5}{8}$ " pin & clip (not included)

HMTD201	2" ball on top, 2 $\frac{5}{16}$ " ball on bottom (6,000 lb)	\$51.95
HMSD201	2"(7,500 lb) & 2 $\frac{5}{16}$ "(10,000) ball, solid shank	\$64.95
HMSD202	2"(10,000 lb) & 2 $\frac{5}{16}$ "(16,000) ball, solid shank	\$67.95

### Cushioned Ball Mounts



- Internal polypropylene cushions act as shock absorbers
- Fits 2" standard receivers
- Uses  $\frac{5}{8}$ " pin & clip. (Not included)
- 2,000 lb tongue weight

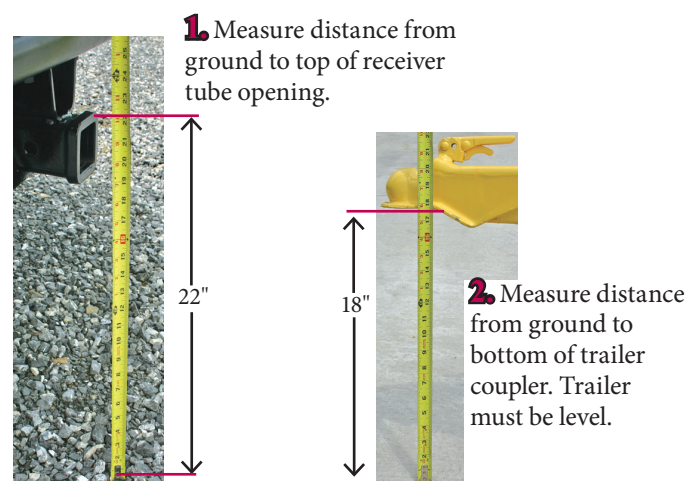
HCM2	2" drop	1" ball hole	10,000 lb	\$81.95
HCM4	4" drop	1" ball hole	10,000 lb	\$89.95
HCMH2	2" drop	1 $\frac{1}{4}$ " ball hole	14,000 lb	\$117.95

### ATV Ball mount



HMATVS4	Fits 2" ATV receiver, has 2" ball	\$48.95
---------	-----------------------------------	---------

### Calculating Ball Mount Drop Needed



- Measure distance from ground to top of receiver tube opening.
- Measure distance from ground to bottom of trailer coupler. Trailer must be level.
- Subtract trailer coupler height from receiver tube height to calculate amount of ball mount drop needed. (Opposite for rise) (Be sure to figure in the vehicle sag that will occur when trailer tongue weight is applied to vehicle)



## 2" Adjustable Ball Mounts

### Pin Style Aluminum Ball Mounts



- Fits 2" standard receivers
- Polished aluminum
- Stunning good looks
- Lightning quick adjustment
- Can be flipped under vehicle
- 2" ball: 8,000 GTW, 1,000 TW
- 2 5/16" ball: 10,000 GTW, 1,000 TW
- 1 year warranty

HMSA704	4" drop	\$240.00
HMSA706	6" drop	\$240.00
HMSA708	8" drop	\$250.00
HMSA710	10" drop	\$250.00
HMSA700	Keyed-Alike Locking Pin Set	\$51.95

### Integrated Scale Aluminum Ball Mounts



- Fits 2" standard receivers
- Polished aluminum
- Stunning good looks
- Lightning quick adjustment
- Built-in mechanical tongue weight scale!
- Proper tongue weight gives better steering, braking, & reduced sway
- 2" ball: 8,000 GTW, 800 TW
- 2 5/16" ball: 10,000 GTW, 1,000 TW
- 1 year warranty

HMSA804	4" drop	\$340.00
HMSA806	6" drop	\$340.00
HMSA808	8" drop	\$350.00
HMSA809	10" drop	\$350.00
HMSA700	Keyed-Alike Locking Pin Set	\$51.95

### Locking Aluminum Ball Mount



- Fits 2" standard receivers
- Polished aluminum
- 2" & 2 5/16" balls
- Built-in anti-rattle
- Built-in receiver lock with keys
- Can be flipped under vehicle
- 10,000/8,000 GTW, 1,000 TW
- 1 year warranty

HMSA406	6" drop	\$280.00
---------	---------	----------

### 180° Aluminum Ball Mounts



- Fits 2" standard receiver
- 2" ball: 8,000 GTW, 1,500 TW
- 2 5/16" ball: 12,500 GTW, 1,500 TW
- Aluminum shank
- Stainless steel balls
- 180° model does not include built-in tongue weight scale
- Includes dual pin lock assembly and keyed alike SS receiver lock
- Limited Lifetime Warranty

HMSW704	4" drop	\$289.00
HMSW706	6" drop	\$289.00
HMSW708	8" drop	\$309.00
HMSW710	10" drop	\$329.00

### Aluminum Ball Mounts



- Fits standard 2" receiver
- 2" ball: 8,000 GTW, 1,500 TW
- 2 5/16" ball: 12,500 GTW, 1,500 TW
- Built-in tongue weight scale
- Aluminum shank
- Stainless steel balls
- Includes dual pin lock assembly and keyed alike SS receiver lock
- Limited Lifetime Warranty

HMSW804	4" drop	\$329.00
HMSW806	6" drop	\$349.00
HMSW808	8" drop	\$359.00
HMSW810	10" drop	\$379.00

### Combo Hitch Lock



HMSW700	Replacement receiver and dual pin lock	\$50.00
HMSW701	Dual pin key lock assembly only	\$20.00



## 2" Adjustable Ball Mounts



### GEN-Y Phantom-X Ball Mounts



- Fits 2" standard receivers
- Uses 5/8" pin and clip (not included)
- Ball plate has 1" ball hole
- Light weight, tough, durable
- 100% Satisfaction Guaranteed!
- Limited Lifetime Warranty

<b>HMSG053X</b>	7,000 GTW	700 TW	4.5" drop	<b>\$151.99</b>
<b>HMSG054X</b>	7,000 GTW	700 TW	7" drop	<b>\$162.99</b>

### GEN-Y Glyder Torsion Ball Mounts



HMSG12001



HMSG12005

- 1" ball hole
- Fits 2" standard receivers
- Precision milled & drilled
- Heavy duty rubber torsion-flex cords
- 100% Satisfaction Guaranteed!
- 5-year torsion warranty; Lifetime workmanship warranty!

<b>HMSG12001</b>	7,000 GTW	400-700 TW	2" drop	<b>\$209.99</b>
<b>HMSG12005</b>	7,000 GTW	400-700 TW	6" drop	<b>\$314.99</b>

### Adjustable Ball Mounts



HMT20A

- Fits standard 2" receivers
- Uses 5/8" pin and clip (not included)
- 11" drop with ball plate down, and in lowest hole
- Adjustable ball mounts can be used in rise position
- Ball plate attaches with two 5/8" pins for easy adjustment
- Tongue weight rating is 10% of capacity

<b>HMT20A</b>	1" ball hole, 13" length, 6,000 lb capacity	<b>\$59.95</b>
<b>HMS210A</b>	1" ball hole, 12 3/4" length, 10,000 lb capacity	<b>\$116.95</b>
<b>HMT20B</b>	Extra ball plate for HMT20A	<b>\$35.95</b>

### GEN-Y Mega-Duty Ball Mounts



HMSG524

- Fits 2" standard receivers
- Super heavy duty construction
- 2" and 2 5/16" balls, and pintle all in 1 unit
- 100% Satisfaction Guaranteed!

<b>HMSG324</b>	10,000/10,000 GTW	1,500 TW	7.5" drop	<b>\$311.99</b>
<b>HMSG523</b>	16,000/10,000 GTW	2,000 TW	5" drop	<b>\$332.99</b>
<b>HMSG524</b>	16,000/10,000 GTW	2,000 TW	7.5" drop	<b>\$345.99</b>
<b>HMSG525</b>	16,000/10,000 GTW	2,000 TW	10" drop	<b>\$367.99</b>
<b>HMSG090</b>	1 7/8" add-on ball for Gen-Y ball mounts			<b>\$22.99</b>
<b>HMSG032</b>	2" Replacement Pintle Lock			<b>\$50.99</b>
<b>HMSG099</b>	5/8" replacement pin, 4 1/8" usable length			<b>\$15.99</b>

### GEN-Y Boss Torsion Ball Mounts



HMSG1225

- Fits 2" standard receivers
- Super heavy duty construction
- Heavy duty rubber torsion-flex cords
- Choose model according to TW for optimum performance
- Built-in mechanical tongue weight indicator
- 2" and 2 5/16" balls, and pintle all in 1 unit
- 2" ball is rated to 10,000 GTW
- 100% Satisfaction Guaranteed!
- 5-year torsion warranty; Lifetime workmanship warranty!

<b>HMSG1024</b>	10,000 GTW	500-1,100 TW	5" drop	<b>\$676.99</b>
<b>HMSG1225</b>	16,000 GTW	800-1,700 TW	7.5" drop	<b>\$756.99</b>
<b>HMSG090</b>	1 7/8" add-on ball for Gen-Y ball mounts			<b>\$22.99</b>
<b>HMSG032</b>	2" Replacement Pintle Lock			<b>\$50.99</b>
<b>HMSG099</b>	5/8" replacement pin, 4 1/8" usable length			<b>\$15.99</b>



## Adjustable Ball Mounts



- Fits standard 2" receiver
- Includes 5/8" receiver pin and clip
- 2 pin holes give the option of 10 1/4" or 11 1/4" length

HMSD205	6" drop, 2" & 2 5/16" balls & shank, 14,000	\$205.95
HMSD206	10" drop, 2" & 2 5/16" balls & shank, 14,000	\$430.95
HMSD209	6" drop, 2 5/16" duplex pintle & shank, 13,000	\$313.95
HMSD217	2" Duplex Pintle only, 10,000 lb capacity	\$176.95
HMSD216	2 5/16" Duplex Pintle only, 13,000 lb capacity	\$181.95
HMSD218	Adjustable Shank only, 14,000 lb capacity	\$139.95
HMSD213	Locking Pin Set (receiver and channel)	\$97.95
HMSD312	Replacement pair of pins	\$26.95

## Rebellion Cushioned Ball Mount



- Fits 2" receiver
- Cushioned with heavy duty ShockDrop™ technology
- Dampens jerking and jarring for smoother tow
- 6" drop, shank cannot be used upside down
- HMSD236 has standard 3 3/8" by 1 3/4" bolt pattern, 4 bolts included

HMSD230	6" drop, 2" & 2 5/16" balls & shank, 15,000	\$449.95
HMSD236	Pintle mount plate for HMSD230	\$83.95

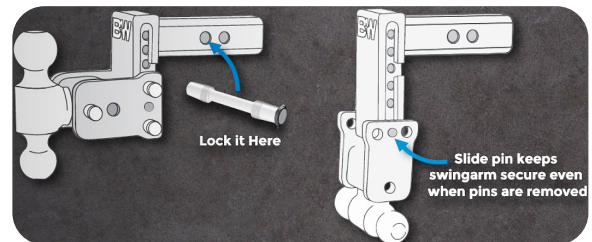
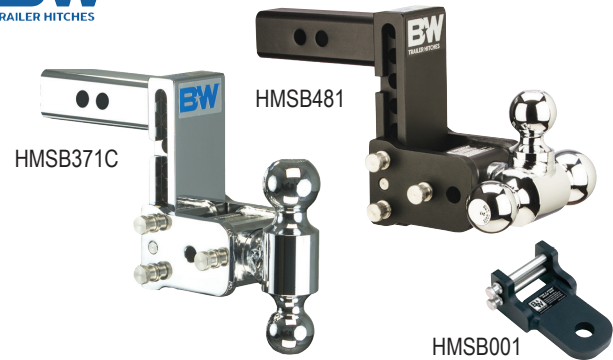
## 2" Adjustable Ball Mounts



- Fits 2" receiver
- Built-in anti-rattle helps promote quiet towing
- Dual ball can be used on other weight distributing shanks
- 3/4" holes in ball head spaced 2 1/2" center to center

ITEM#	Drop	2 5/16"	2"	Price
HMSD360	5 1/2" drop	15K	10K	\$219.95
HMSD362	10" drop	15K	10K	\$299.95
HMSD361	Replacement dual ball head with pins			\$139.95

## Tow & Stow



- Stows under vehicle when not in use
- Ball Ratings: 1 1/8" (3500 lb), 2" (7500 lb) & 2 5/16" (10,000 lb)
- HMSB001- not intended to be used as a ball mount

ITEM#	MFG#	Color	Drop	Ball Sizes	Price
HMSB331	TS10033B	Black	3"	2", 2 5/16"	\$239.95
HMSB471	TS10047B	Black	3"	1 1/8", 2", 2 5/16"	\$249.00
HMSB371	TS10037B	Black	5"	2", 2 5/16"	\$269.95
HMSB481	TS10048B	Black	5"	1 1/8", 2", 2 5/16"	\$279.00
HMSB401	TS10040B	Black	7"	2", 2 5/16"	\$299.00
HMSB491	TS10049B	Black	7"	1 1/8", 2", 2 5/16"	\$309.00
HMSB431	TS10043B	Black	9"	2", 2 5/16"	\$349.00
HMSB371C	TS10037C	Chrome	5"	2", 2 5/16"	\$329.00
HMSB481C	TS10048C	Chrome	5"	1 1/8", 2", 2 5/16"	\$339.00
HMSB001	TS35100B	Draw bar Attachment for 2" Tow & Stow			\$74.95
HMSB101	TS35010	Replacement Pin & Clip for Tow & Stow			\$12.95

# Miscellaneous Ball Mounts



## Adjustable/Convert-A-Ball Ball Mounts



- HPH1: Stainless steel 3-ball combination & pintle sleeve; 10,000GTW/2,000TW with interchangeable balls; 25,000GTW/5,000TW with pintle sleeve; mounting hardware included.
- Shank bars available in other sizes, see page 133

<b>HW030</b>	Cushioned shank bar, 10,000/2,000	\$153.95
<b>HW032</b>	Ball mount adapter, 1" ball hole, 10,000/2,000	\$43.95
<b>HW034</b>	Clevis pin adapter, 1" ball/pin hole, 10,000/2,000	\$59.95
<b>HW036</b>	Pintle 4-bolt adapter plate, 10,000/2,000	\$50.95
<b>HW039</b>	Pair of 3/4" pins & clips for HW032/34/36	\$11.95
<b>HPH1</b>	Pintle convert-a-ball combo	\$325.95

## Clevis Mounts & Receiver Tow Hooks



- Fits 2" receiver unless noted otherwise
- Do not exceed receiver hitch capacity
- Clevis Mounts: 1" clevis holes
- Use 3/8" receiver pin & clip (not included)

<b>HMS20C</b>	Solid steel clevis mount, 8K	\$49.95
<b>HCMCC</b>	Cushioned clevis mount, 10K	\$98.95
<b>HARPP1</b>	1" Clevis tongue pin, poly-coated handle	\$9.99
<b>HATH5</b>	Forged tow hook	\$58.95
<b>HATH12</b>	Forged tow eye, 10K straight line pull	\$46.95
<b>HATH326</b>	2" receiver 3/4" shackle, 9,500 WLL	\$74.95
<b>HATH327</b>	*2 1/2" receiver* 3/4" shackle, 13,000 WLL	\$76.95

## GEN-Y Bolt-On Adjustable Hitch



- Bolt or weld to your truck
- Super heavy duty construction
- 2" and 2 5/16" balls, and pintle all in 1 unit
- 2 pins included
- 100% Satisfaction Guaranteed!

<b>HMSG124</b>	16,000/10,000 GTW, 2,000 TW	7 1/2" drop	\$367.99
<b>HMSG032</b>	2" Replacement Pintle Lock		\$50.99
<b>HMSG099</b>	5/8" replacement pin, 4 1/8" usable length		\$15.99

## FLASH Steel Ball Mounts



- Fits 2" standard receivers
- Glossy black powder coated
- 2" and 2 5/16" balls
- No tools needed to adjust height
- Solid forged steel construction
- 1 year warranty

<b>HMSD706</b>	6" drop	12,000/8,000 GTW	1,200 TW	\$240.00
<b>HMSD710</b>	10" drop	12,000/8,000 GTW	1,200 TW	\$250.00
<b>HMSD700</b>	Keyed-Alike Locking Pin Set			\$51.95

## Class 1 & 2 Ball Mounts



- Fits standard 1 1/4" receiver
- 3/4" ball hole
- Uses 1/2" pin & clip (not included)
- 3,500 lb Gross Trailer Weight
- Length is measured from pin hole to ball hole

<b>HMS122</b>	1 1/4" drop	7" long	\$29.95
<b>HMS122L</b>	1 1/4" drop	9 3/4" long	\$36.95
<b>HMS124</b>	3 1/2" drop	7 1/4" long	\$42.95
<b>HMS124L</b>	4" drop	10" long	\$32.95
<b>HMS125</b>	5" rise only	10" long	\$32.95
<b>HMS126</b>	6 3/4" drop	7 1/4" long	\$51.95

## 2 1/2" Ball Mounts



HMT254

- Fits 2 1/2" receiver
- 1 1/4" ball hole
- Uses 5/8" pin & clip. (not included)
- Length is measured from pin hole to ball hole

HMT252	2" drop	8 1/2" long	16,000GTW, 1,600TW	\$68.95
HMT254	4" drop	9 5/8" long	16,000GTW, 1,600TW	\$72.95
HMT256	6" drop	10 3/4" long	16,000GTW, 1,600TW	\$88.95
HMT258	7 3/4" drop	10" long	15,000GTW, 1,500TW	\$65.95

## 2 1/2" Cushioned Ball Mounts



Cut-away View



HCMV252

- Fits 2 1/2" receiver
- 1 1/4" ball hole
- Uses 5/8" pin & clip. (not included)
- Enclosed polypropylene cushions act as shock absorbers and reduce bouncing and jerking, giving you and your pickup a smoother ride.

HCMV252	2" drop	9" long	18,000GTW/2,000 TW	\$130.00
HCMV254	4" drop	9 1/2" long	18,000GTW/2,000 TW	\$140.00

## 2 1/2" Forged Ball Mounts



HMS954

- Fits 2 1/2" receiver
- 1 1/4" ball hole
- Uses 5/8" pin & clip. (not included)
- Length is measured from pin hole to ball hole

HMS952	2" drop	8 1/2" long	20,000GTW, 2,700TW	\$91.95
HMS954	4" drop	8 1/2" long	20,000GTW, 2,700TW	\$103.95
HMS956	6" drop	9" long	20,000GTW, 2,700TW	\$150.95
HMS958	8" drop	10" long	20,000GTW, 2,700TW	\$177.95

## 2 1/2" Adjustable Ball Mounts



HMSD370

- Fits 2 1/2" receiver
- Built-in anti-rattle helps promote quiet towing
- Dual ball can be used on other weight distributing shanks
- 3/4" holes in ball head spaced 2 1/2" center to center
- HMSD372: not intended for use in rise position

ITEM#	Drop	2 5/16"	2"	Price
HMSD370	5 1/2" drop	20K	10K	\$289.95
HMSD372	11 3/4" drop	20K	10K	\$359.95

## 2 1/2" Triple Tow Ball Mounts



HMS25TP



HMT25TL

- Fits 2 1/2" receiver
- Uses 5/8" pin & clip (not included).
- HMS25TP: cushioned draw bar to give you smoother towing
- HMT25TL: 7 1/2" shank for 1 5/8" ball, 8 3/4" shank for 2" and 2 5/16" ball
- Does not fit all Ford OEM hitches

ITEM#	Ball Type	2 5/16"	2"	1 7/8"	Price
HMT25TL	Black	14,000	10,000	2,000	\$83.95
HMS25TP	Cushion	10,000	10,000	2,000	\$199.01

## 2 1/2" FLASH Steel Ball Mounts



HMSD756



HMSD750

- Fits 2 1/2" receiver
- No tools needed to adjust height
- Solid forged steel construction
- Glossy black powder coated
- 2" and 2 5/16" balls

HMSD756	20,000/12,000 GTW	2,000 TW	6" drop	\$270.00
HMSD759	20,000/12,000 GTW	2,000 TW	10" drop	\$280.00
HMSD750	Locking pin set for receiver and ball adjustment			\$58.95



## 2½" Adjustable Ball Mounts



### 2½" Tow & Stow



HMSB372

- Fits 2½" receiver
- Stows under vehicle when not in use
- Ball Ratings: 1½" (3,500 lb), 2" (7,500 lb) & 2½" (14,500 lb)

ITEM#	MFG#	Color	Drop	Ball Sizes	Price
HMSB372	TS20037B	Black	5"	2", 2½"	\$309.00
HMSB482	TS20048B	Black	5"	1½", 2", 2½"	\$319.00
HMSB402	TS20040B	Black	7"	2", 2½"	\$349.00
HMSB492	TS20049B	Black	7"	1½", 2", 2½"	\$359.00
HMSB432	TS20043B	Black	9"	2", 2½"	\$389.00
HMSB002	TS35200B	Draw bar Attachment for 2½" Tow & Stow			\$86.95



### 2½" MultiPro Tow & Stow



HMSB404

- Fits 2½" receiver
- Stows under vehicle when not in use
- Ball Ratings: 2" (7,500 lb) & 2½" (14,500 lb)
- Specially designed for use with GMC/Chevy MultiPro tailgate

ITEM#	MFG#	Color	Drop	Ball Sizes	Price
HMSB404	TS20066BMP	Black	7"	2", 2½"	\$389.00

### 2½" Locking Aluminum Ball Mounts



HMSA506

- Fits 2½" receiver
- Polished Aluminum
- Built-in Anti-rattle
- Built-in receiver lock with keys
- Can be flipped under vehicle
- 2" & 2½" balls
- 10,000/8,000 GTW, 1,000 TW
- 1 year warranty

HMSA506	6" drop	\$310.00
---------	---------	----------



18,000 lbs.

HMSA756



HMSA750

- Fits 2½" receiver
- Polished aluminum
- Stunning good looks
- Lightning quick adjustment
- Can be flipped under vehicle
- 2" ball: 12,000 GTW, 1,200 TW
- 2½" ball: 18,000 GTW, 1,800 TW
- 1 year warranty

HMSA756	6" drop	\$270.00
HMSA758	8" drop	\$280.00
HMSA759	10" drop	\$280.00
HMSA750	Keyed-Alike Locking Pin Set	\$58.95

### 2½" 180° Aluminum Ball Mounts



HMSW756



- Fits 2½" receiver
- 2" ball: 8,000 GTW, 2,200 TW
- 2½" ball: 18,500 GTW, 2,200 TW
- Stainless steel balls
- Aluminum shank
- 180° model does not include built-in tongue weight scale
- Includes dual pin lock assembly and keyed alike receiver lock
- Limited Lifetime Warranty

HMSW756	6" drop	\$319.00
HMSW758	8" drop	\$339.00
HMSW759	10" drop	\$359.00

### 2½" Aluminum Ball Mounts



HMSW856



- Fits 2½" receiver
- 2" ball: 8,000 GTW, 2,200 TW
- 2½" ball: 18,500 GTW, 2,200 TW
- Built-in tongue weight scale
- Aluminum shank
- Stainless steel balls
- Includes dual pin lock assembly and keyed alike receiver lock
- Limited Lifetime Warranty

HMSW856	6" drop	\$369.00
HMSW858	8" drop	\$379.00
HMSW859	10" drop	\$399.00

### 2½" GEN-Y Mega-Duty Ball Mounts



- Fits 2½" receiver
- Super heavy duty construction
- 2" and 2½" balls, and pintle all in 1 unit
- 100% Satisfaction Guaranteed!

<b>HMSG623</b>	6" drop	21,000/10,000 GTW	3,000 TW	<b>\$449.99</b>
<b>HMSG624</b>	9" drop	21,000/10,000 GTW	3,000 TW	<b>\$459.99</b>
<b>HMSG090</b>	1½" add-on ball for Gen-Y ball mount			<b>\$22.99</b>
<b>HMSG062</b>	2½" Replacement Pintle Lock			<b>\$63.99</b>
<b>HMSG099</b>	⅝" replacement pin, 4⅞" usable length			<b>\$15.99</b>

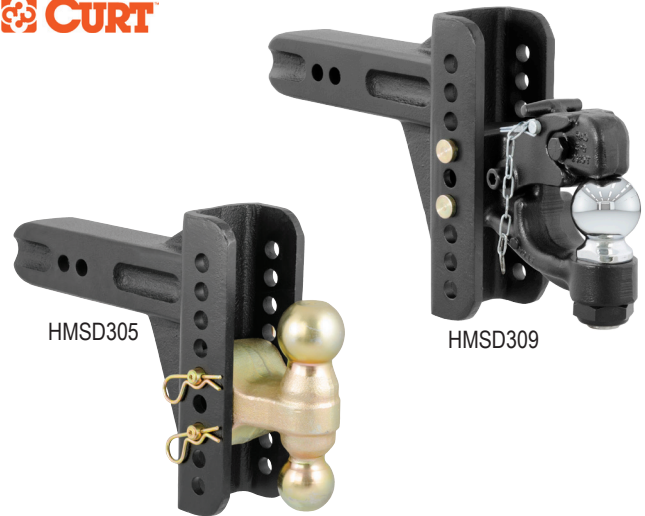
### 2½" GEN-Y Boss Torsion Ball Mounts



- Fits 2½" standard receiver
- Super heavy duty construction
- Heavy duty rubber torsion-flex cords
- Choose a model to match your TW for optimum performance
- Built-in mechanical tongue weight indicator
- 2" and 2½" balls, and pintle all in 1 unit
- 2" ball is rated to 10,000 GTW
- 100% Satisfaction Guaranteed!
- 5-year torsion warranty; Lifetime workmanship warranty!

<b>HMSG1124</b>	5" drop	16,000 GTW	1,000-1,700 TW	<b>\$791.99</b>
<b>HMSG1125</b>	7½" drop	16,000 GTW	1,000-1,700 TW	<b>\$814.99</b>
<b>HMSG1324</b>	6" drop	21,000 GTW	1,500-2,400 TW	<b>\$917.99</b>
<b>HMSG1325</b>	9" drop	21,000 GTW	1,500-2,400 TW	<b>\$951.99</b>
<b>HMSG090</b>	1½" add-on ball for Gen-Y ball mounts			<b>\$22.99</b>
<b>HMSG062</b>	2½" Replacement Pintle Lock			<b>\$63.99</b>
<b>HMSG099</b>	⅝" replacement pin, 4⅞" usable length			<b>\$15.99</b>

### 2½" Adjustable Ball Mounts



- Fits 2½" receiver
- Includes ⅝" receiver pin and clip
- 2 pin holes gives the option of 11" or 12" length

<b>HMSD305</b>	6" drop, 2" & 2½" balls with shank, 20,000	<b>\$339.95</b>
<b>HMSD306</b>	10" drop, 2" & 2½" balls with shank, 20,000	<b>\$489.95</b>
<b>HMSD309</b>	2½" duplex pintle with adjustable shank, 20,000	<b>\$414.95</b>
<b>HMSD316</b>	2½" duplex pintle only, 20,000 GTW	<b>\$213.95</b>
<b>HMSD318</b>	Shank only, 9 holes vertical adjustment	<b>\$206.95</b>
<b>HMSD213</b>	Locking Pin Set (receiver and channel)	<b>\$97.95</b>
<b>HMSD312</b>	Replacement pair of pins	<b>\$26.95</b>

### 2½" Rebellion Adjustable Ball Mount



- Fits 2½" receiver
- Cushioned with heavy duty ShockDrop™ technology
- 8" drop, 1" rise, shank cannot be used upside down
- HMSD236 has standard 3⅜" by 1¼" bolt pattern, 4 bolts included

<b>HMSD330</b>	2" & 2½" balls with adjustable shank, 20,000	<b>\$649.95</b>
<b>HMSD236</b>	Pintle mount plate for HMSD330	<b>\$83.95</b>

# 3" Adjustable Ball Mounts



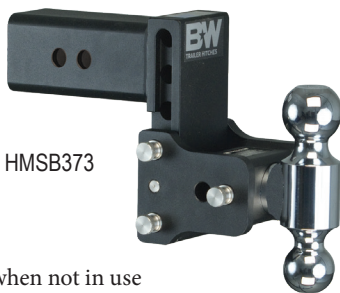
## 3" Adjustable Ball Mount



- Fits 3" receiver
- 10" drop
- 2 pin holes gives the option of 11" or 12" length

**HMSD356** 2" & 2½" balls with adjustable shank, 21,000 **\$509.95**

## 3" Tow & Stow



HMSB373

- Fits 3" receiver
- Stows under vehicle when not in use
- Ball Ratings: 2" (7,500 lb) & 2½" (21,000 lb)

ITEM#	MFG#	Color	Drop	Ball Sizes	Price
HMSB373	TS30037B	Black	5"	2" & 2½"	\$349.00
HMSB483	TS30048B	Black	5"	1½", 2", 2½"	\$359.00
HMSB403	TS30040B	Black	7"	2" & 2½"	\$379.00
HMSB493	TS30049B	Black	7"	1½", 2", 2½"	\$399.00
HMSB003	TS35300B	Drawbar attachment for 3" Tow & Stow			\$98.95
HMSB102	TS35011	Tow & Stow replacement pin, 3"			\$15.95

## 3" Aluminum Ball Mounts



- Fits 3" receiver
- 2" ball: 8,000 GTW, 2,200 TW
- 2½" ball: 21,000 GTW, 2,200 TW
- Built-in tongue weight scale
- Aluminum shank
- Stainless steel balls
- Includes dual pin lock assembly and keyed alike SS receiver lock
- Limited Lifetime Warranty



HMSW836

HMSW836	6" drop	\$419.00
HMSW838	8" drop	\$439.00
HMSW839	10" drop	\$449.00

## 3" GEN-Y Mega-Duty Ball Mounts



HMSG1724

- Fits 3" receiver
- Super heavy duty construction
- 2" and 2½" balls, and pintle all in 1 unit
- ¾" and 5/8" receiver pin holes. Please order correct size pin
- 100% Satisfaction Guaranteed!

HMSG1723	32,000/10,000 GTW	3,500 TW	6" drop	\$520.99
HMSG1724	32,000/10,000 GTW	3,500 TW	9" drop	\$532.99
HMSG090	1½" add-on ball for Gen-Y ball mount			\$22.99
HMSG0162	Pintle lock, 2½" shank, ¾" pin hole, 32K			\$16.99
HMSG097	¾" replacement pin, 4½" usable length			\$16.99
HMSG099	5/8" replacement pin, 4½" usable length			\$15.99

## 3" Forged Ball Mounts



HMS934

- Fits 3" receiver
- 1¼" ball hole
- Uses long 5/8" pin & clip HARPL (Not included)

HMS934	4" drop	9" long	21,000GTW/2,800TW	\$130.95
HMS936	6" drop	10" long	21,000GTW/2,800TW	\$139.95
HMS938	8" drop	10½" long	21,000GTW/2,800TW	\$147.95

## 3" 180° Aluminum Ball Mounts



HMSW738

- Fits 3" receiver
- 2" ball: 8,000 GTW, 2,200 TW
- 2½" ball: 21,000 GTW, 2,200 TW
- Aluminum shank
- Stainless steel balls
- 180° model does not include built-in tongue weight scale
- Includes dual pin lock assembly and keyed alike SS receiver lock
- Limited Lifetime Warranty

HMSW736	6" drop	\$359.00
HMSW738	8" drop	\$379.00
HMSW739	10" drop	\$389.00





## Receiver Pins



- Secures ball mount in receiver hitch
- $\frac{5}{8}$ " pins are used on class 3, 4, & 5 receiver hitches
- $\frac{1}{2}$ " pins are used on class 1 & 2 receiver hitches
- HALP316 lynch does not fit HARP12

	$\frac{5}{8}$ " pin & clip, 3" usable length for 2" receivers	\$3.99
HARP	Buy 6 or more, each	\$3.89
	Buy 12 or more, each	\$3.79
HARPL	$\frac{5}{8}$ " pin & lynch, 5" usable length for up to 3" rec.	\$4.99
HARP12	$\frac{1}{2}$ " pin & clip	\$2.99
HALP316	$\frac{3}{16}$ " replacement lynch for HARP or HARPL	\$0.99
HAHP1	Replacement clip for HARP	\$1.79
HAHP	Replacement clip for HARP12	\$0.79

## Pivot Latch Receiver Pin



- Just pull out on the barrel head and rotate to latch in place
- Spring loaded barrel head locks on either side of the pin
- Class 3, 4, & 5 hitches

ITEM#	Description	Price
HARP4	Chrome $\frac{5}{8}$ " pivot pin	\$7.99
HARP42	Stainless Steel $\frac{5}{8}$ " pivot pin	\$17.95

## Lynch Pins



HALP316	$\frac{3}{16}$ " lynch pin	\$0.99
HALP516	$\frac{5}{16}$ " lynch pin	\$1.19
HALP716	$\frac{7}{16}$ " lynch pin	\$1.99

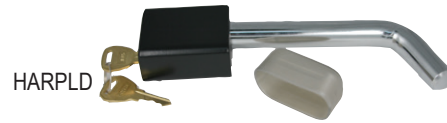
## Weigh Safe Clamshell Converter



- Goes over most 2" balls to convert to  $2\frac{5}{16}$ " ball

HLB07	2" to $2\frac{5}{16}$ " clamshell converter	\$20.00
-------	---	---------

## Locking Receiver Pins



- Gives you peace of mind while parked or towing
- Includes key-hole cover

ITEM#	Size	Style	Fits	Price
HARPL20	$\frac{5}{8}$ " for class 3	twin grip	2" receivers	\$7.99
HARPLD	$\frac{5}{8}$ " for class 3-5	bent pin	2"-2 $\frac{1}{2}$ " receivers	\$14.95
HARPLBB	$\frac{5}{8}$ " for class 3-5	barbell	2" receivers	\$22.95
HARPLBB25	$\frac{5}{8}$ " for class 3-5	barbell	2"-2 $\frac{1}{2}$ " receivers	\$20.95
HARPLBB30	$\frac{5}{8}$ " or $\frac{3}{4}$ " cls 3-5	barbell	2 $\frac{1}{2}$ "-3" receivers	\$27.95
HARPLM	$\frac{1}{2}$ " for class 1-2	bent pin	1 $\frac{1}{4}$ " receivers	\$14.95

## Stainless Steel Locking Pins



HALS101/300



HALS202



HALS230

- Solid stainless steel
- HALS101/300 limited lifetime warranty

ITEM#	Size	Style	Fits	Price
HALS101	$\frac{1}{2}$ " for class 1-2	barbell	1 $\frac{1}{4}$ " receivers	\$29.95
HALS300	$\frac{5}{8}$ " for class 3-5	barbell	2" receivers	\$33.95
HALS202	$\frac{5}{8}$ " for class 3-5	barbell	2" & 2 $\frac{1}{2}$ " receivers	\$39.95
HALS230	$\frac{5}{8}$ " for class 3-5	barbell	2", 2 $\frac{1}{2}$ ", & 3" receivers	\$58.95

## Poly-coated Pins



ITEM#	Poly-coated	Usable Length	Price
HARPP	Yes	4"	\$6.99
HARPP3	Yes	4 $\frac{1}{2}$ "	\$7.29
HARPP7	Yes	4 $\frac{1}{2}$ "	\$8.19
HARPP117	No	6 $\frac{1}{4}$ "	\$8.29
HARPP1	Yes	4 $\frac{1}{2}$ "	\$9.99
HARPP118	No	6 $\frac{1}{4}$ "	\$12.29