

## Easy Jack



- Pull trailer onto the EZ Jack to lift the tire you wish to change
- Designed to provide a firm grip on any surface
- Can also be used to level RV's and trailers on uneven surfaces
- Excellent wheel chock when in the reversed position
- Provides 5" of elevation
- Made of rugged cast aluminum
- Use on a loaded trailer may void axle warranty

**HAJEZ** Easy Jack, rated up to 20,000 lb **\$89.95**

## RV Leveling Jacks



- Includes a pair of jacks and a "quick" crank
- 24" high when fully extended
- Rated at 5,000 lb each or 10,000 lb per pair

ITEM#		Price
<b>MLSJ24</b>	RV Leveling Jacks	<b>\$106.95 pair</b>
<b>MLSJP15</b>	Hex drill attachment	<b>\$12.95 each</b>

## Aluminum Stabilizer Jacks



These stabilizing jack stands are made of a non-corrosive cast aluminum base, and have a 6,000 lb load capacity. Extends from 11 1/8" to 17" high. Can be bought individually or in a set of four. Not for lifting.

ITEM#		1-3	4+
<b>MLAJ2</b>	Aluminum Jack Stand (each)	<b>\$14.95</b>	<b>\$12.95</b>

## Bulldog A-Frame Jacks



- Mounts into most A-Frame couplers with 3 bolt triangular pattern.

ITEM#	MFG#	Rating	Crank	Travel	Price
<b>TJA234</b>	155032	5,000	Top wind	15"	<b>\$57.95</b>
<b>TJA735</b>	1700100301	5,000	Side wind	15"	<b>\$82.95</b>
<b>TJA224</b>	155022	2,000	Top wind	15"	<b>\$43.95</b>
<b>TJA724</b>	155157	2,000	Side wind	13"	<b>\$77.95</b>
<b>TJP520</b>	500180	Replacement Handle for Bulldog Top wind			<b>\$18.95</b>
<b>TJP522</b>	500251	Replacement Bearing Kit for Bulldog 2K jacks			<b>\$10.95</b>

## A-Frame Jacks



- Mounts into most A-Frame Couplers with 3 bolt triangular pattern.

ITEM#	MFG#	Rating	Crank	Travel	Price
<b>TJA232</b>	1400600303	5,000	Top wind	15"	<b>\$41.95</b>
<b>TJA222</b>	EA20000303	2,000	Top wind	14"	<b>\$28.95</b>
<b>TJA722</b>	RV20000303	2,000	Side wind	14"	<b>\$47.95</b>
<b>HAI100</b>	28921	Replacement Handle for TJA232/222			<b>\$10.95</b>

## Jack Accessories



- TJP936/TJP922/HAJFM- 2" I.D.

<b>TJP936</b>	6" Plastic caster wheel, 1,200 lbs capacity	<b>\$20.95</b>
<b>TJP922</b>	Metal foot mount, 2" high, 5,000 lbs capacity	<b>\$10.95</b>
<b>HAJFM</b>	Metal foot mount, 8" high, 2,000 lbs capacity	<b>\$19.95</b>
<b>HAJWSA</b>	Universal weld-on swivel assembly, 3/8" pin	<b>\$30.95</b>
<b>HAJW09</b>	Replacement 3/8" pin, chain, & clip for HAJWSA	<b>\$7.95</b>
<b>HAJW01</b>	Weld-on swivel collar, 2" O.D. 3/16" pin hole	<b>\$8.99</b>
<b>HAJW03</b>	Weld-on swivel collar, 2" O.D. 5/8" pin hole	<b>\$10.95</b>



## Fold-Up Jacks



- Mounts to the side of the trailer frame, folds up for travel
- HAJMD & TJM722 fit up to 5" tall & 3" thick trailer tongues

ITEM#	MFG#	Mount	Rating	Crank	Travel	Price
TJC232	1401460303	Weld-on collar	5,000	Top wind	10"	\$46.95
TJC732	1401420303	Weld-on collar	5,000	Side wind	10"	\$65.95
TJC233	1401480303	Weld-on collar	5,000	Top wind	15"	\$52.95
TJC222	1400400303	Weld-on collar	2,000	Top wind	10"	\$43.95
TJC223	1401200303	Weld-on collar	2,000	Top wind	15"	\$58.95
TJC723	1401080303	Weld-on collar	2,000	Side wind	15"	\$72.95
TJS222	1401140303	Weld-on swivel	2,000	Top wind	10"	\$43.95
TJM722	EJ10000301	Marine style	1,000	Side wind	One wheel	\$57.95
HAJMD	28155	Marine style	1,500	Side wind	Dual wheel	\$104.95

## Bulldog Weld-on Collar Jacks



- Mounts to the side of the trailer frame, folds up for travel

ITEM#	MFG#	Mount	Rating	Crank	Travel	Price
TJC745	198250	2½" ID round	7,000	Side wind	15"	\$142.95
TJC245	198200	2½" ID round	7,000	Top wind	15"	\$125.95
TJC234	178101	2" OD round	5,000	Top wind	10"	\$103.95
TJC235	178151	2" OD round	5,000	Top wind	15"	\$115.95
TJC734	178201	2" OD round	5,000	Side wind	10"	\$114.95
TJC735	178203	2" OD round	5,000	Side wind	15"	\$125.95
TJC738	195362	2" OD square	5,000	Side wind	15"	\$115.95
TJC224	158451	2" OD round	2,000	Top wind	10"	\$82.95
TJC225	158452	2" OD round	2,000	Top wind	15"	\$95.95
TJC724	158109	2" OD round	2,000	Side wind	10"	\$102.95
TJP520	500180	Replacement top wind handle for Bulldog 150, 160, and 170 series				\$18.95

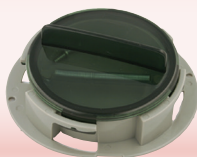
## Lippert Quick Drop® Jack



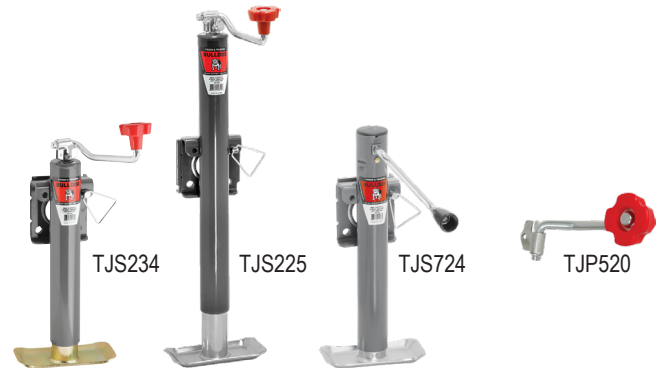
- Mounts into most A-Frame couplers with 3 bolt triangular pattern
- Raise or lower jack using your power drill and ¾" socket head
- Removable foot pad

ITEM#	MFG#	Rating	Crank	Travel	Price
TJA219	733926	2,000	Top wind	14"	\$69.95

Document holder  
See page 37

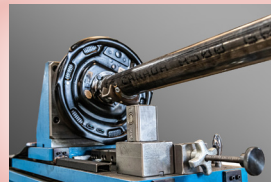


## Bulldog Weld-on Swivel Jacks



- Mounts to the side of the trailer frame, folds up for travel

ITEM#	MFG#	Mount	Rating	Crank	Travel	Price
TJS234	171401	Weld-on swivel	5,000	Top wind	10"	\$95.95
TJS225	151421	Weld-on swivel	2,000	Top wind	15"	\$89.95
TJS224	151401	Weld-on swivel	2,000	Top wind	10"	\$58.95
TJS724	151101	Weld-on swivel	2,000	Side wind	10"	\$94.95
TJP520	500180	Replacement top wind handle for Bulldog 150, 160, and 170 series				\$18.95



Local Custom Axles  
Fast Lead Times!  
See page 52

# Electric Trailer Jacks



## Bulldog Electric Tongue Jacks



HAJET20



HAJET24

- LED night light
- Fits standard 2 1/4" mounting hole
- Drop leg adds 8" of travel
- Corrosion-resistant surfaces retain like-new appearance
- Emergency manual override handle included in case of power loss
- 5 year limited warranty
- HAJET24: spring-loaded drop-leg pin, 3 LED's, and adjustable level

ITEM#	MFG#	Rating	Crank	Travel	Housing	Brand	Price
HAJET20	500187	3,500	Electric	14"	Black	Bulldog	\$344.95
HAJET24	500199	4,000	Electric	14"	Black	Bulldog	\$444.95

## Lippert Smart Jack



- Mounts into most A-Frame couplers with 3 bolt triangular pattern
- Backlit control panel and buttons
- Bright Halo effect LED lighting illuminates your ball & coupler
- Battery indicator alerts user to remaining battery life
- Auto-Hitch memory automatically extends to hitch height
- Auto-Retract feature retracts jack without needing to hold button
- Drop leg adds 4 1/2" of travel; 9" diameter foot pad.
- 1 year limited warranty

ITEM#	MFG#	Rating	Crank	Travel	Price
HAJET18	643589	3,500	Electric	18"	\$335.95

## Flip Jack Foot



Easy as  
1...2...3!



TJP928



TJP929

- No bending or kneeling
- Saves 50 cranks up and down
- Nothing extra to store or keep track of such as wood blocks
- Automatically locks down and flips up while cranking
- Attaches to most jacks, pin & clip included
- 1,400 lb tongue weight rating, 4,000 lb lift capacity

TJP928	Flip Jack Foot 4" tall	\$52.95
TJP929	Flip Jack Foot 6" tall	\$52.95

## Lippert Power Stance™ Tongue Jack



HAJETPS



HAJET14

- Power from vehicle 7RV with optional Power Swap cord!
- Integrated safety chain and power cord storage
- 4 LED lights
- Mounts into most A-Frame couplers with 3 bolt triangular pattern
- Removable foot
- 1 year limited warranty

ITEM#	MFG#	Rating	Crank	Travel	Price
HAJET14	813748	3,500	Electric	18"	\$274.95
HAJETPS	813749	Power Swap Cord for 7RV			\$28.95

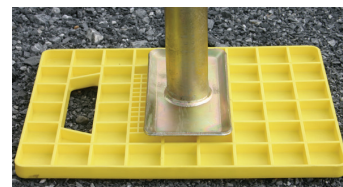
## Surface Level



- Easy to see reflective bubble
- Level your trailers, shop equipment, picture frames, appliances, etc.
- Peel and stick adhesive backing

ML09510	2" Diameter Surface Level	\$5.99
---------	---------------------------	--------

## Super RV Jack Pads



Great for RV's to prevent jack legs from sinking into the ground.

- 14" x 10" x 3/4" thick
- Lightweight and easy to use
- Heavy duty construction
- Five year limited warranty
- Tested to 40,000 PSI.

HAJPO2	Pack of 2 Jack Pads	\$34.95
--------	---------------------	---------



## Bulldog Medium Duty Jacks



TJW234

TJW836

- 2½" square
- Drop leg adds 13½" of travel
- Equipped with grease fitting

ITEM#	MFG#	Mount	Support	Lift	Crank	Travel	Price	
TJW234	190704	Direct weld	8,000	5,000	Top wind	15"	\$120.95	
TJW734	190754	Direct weld	8,000	5,000	Side wind	15"	\$123.95	
TJW336	190708	Weld-on collar	8,000	5,000	Top wind	15"	\$156.95	
TJW836	190758	Weld-on collar	8,000	5,000	Side wind	15"	\$170.95	
TJP525	500171	Side wind handle for 8k Bulldog 190 series jacks						\$26.95
TJP962	28963	Drop leg pin for 8k Bulldog 190 series jacks						\$5.99

## Pro Series Medium Duty Jacks



TJW232

TJW732

- 2¼" square
- Drop leg adds 13½" of travel

ITEM#	MFG#	Rating	Crank	Travel	Price
TJW232	1400800383	8,000	Top wind	15"	\$87.95
TJW732	1400850383	8,000	Side wind	15"	\$92.95

## Medium Duty Jacks



HAJH07

HAJH08



TJP726

- 2½" square
- Drop leg adds 12" of travel
- Equipped with grease fitting

ITEM#	Support	Lift	Crank	Travel	Price
TJW235	8,000	7,000	Top wind	15"	\$78.95
TJW735	8,000	7,000	Side wind	15"	\$86.95
HAJFD2	Replacement drop leg for HAJH07/08				\$29.95
TJP962	Replacement ½" drop leg pin for HAJH07/08				\$5.99
TJP726	¾" thrust bearing for HAJH07				\$6.99

## Bulldog 10K Jacks



TJW245

TJW745

- 3" square
- Drop leg adds 13½" of travel

ITEM#	MFG#	Support	Lift	Crank	Travel	Price
TJW245	180354	10,000	7,200	Top wind	15"	\$164.95
TJW745	180455	10,000	7,200	Side wind	15"	\$187.95
TJP526	800144	Side wind crank kit for 10k Bulldog 180 series				\$66.95
TJP727	001021	Thrust Bearing for TJW245/745				\$13.95

## Bulldog Velocity Jack



- Mounts without welding
- Proprietary high-speed motor
- Includes wired remote (wireless controller #500527 available)
- Tandem application available — call for details
- 5 year limited warranty

ITEM#	MFG#	Rating	Crank	Travel	Price
HAJET70	185400	12,000	Electric	24"	\$1,329.00



## Bulldog Heavy Duty Jacks



TJH723

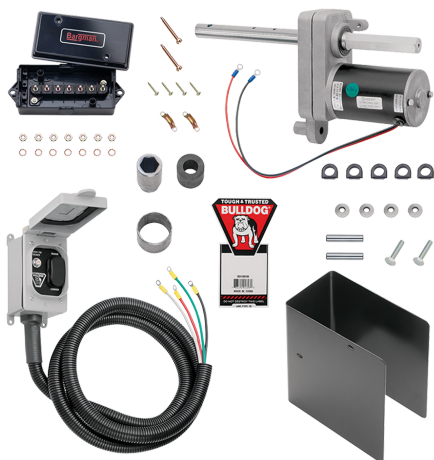
TJH725

TJH232

- 4" square
- 12½" of travel, drop leg adds 13½" of travel

ITEM#	MFG#	Support	Lift	Crank	Spring	Pin	Price
TJH723	182800	12,000	10,000	Side wind	Yes	Side	\$176.95
TJH725	182815	12,000	10,000	Side wind	Yes	Front	\$218.95
TJH232	182304	12,000	10,000	Top wind	No		\$199.95
HAJHH	1400920383	Handle for TJH723/725					\$21.95
TJP728	001015	Thrust bearing for 12k Bulldog 182 series jacks					\$8.95

## Powered Drive Kit



- 7,500 lb lift capacity
- Lifts 3" per minute at typical working loads
- For single speed jacks only
- Includes all necessary components for ease of installation
- Designed for use with 12,000 lb Bulldog jacks only

ITEM#	MFG#	Description	Price
TJP790	1824200100	Bulldog Powered Drive Kit	\$899.95

## Pro Series Heavy Duty Jacks



TJH722

TJH724

- 4" square (Primer may be black or gray)
- 12½" of travel, Spring return drop leg adds 13½" of travel

ITEM#	MFG#	Support	Crank	Pin	Price
TJH722	140094	12,000	Side wind	Side	\$172.95
TJH724	1400950376	12,000	Side wind	Front	\$172.95

## 2 Speed Jacks



TJH832

TJH831

- 4" square
- Low gear: 27 turns per 1" of travel
- High gear: 9 turns per 1" of travel
- 12½" of travel, Drop leg adds 13½" of travel
- Planetary gearbox fits within the width profile of the jack's outer tube, eliminating the need for spacers

ITEM#	MFG#	Type	Support	Lift	Spring	Pin	Price
TJH832	183401	Primary	12,000	10,000	No	Side	\$334.95
TJH831	182411	Companion	12,000	10,000	No	Side	\$209.95
TJH834	183816	Primary	12,000	10,000	Yes	Front	\$319.95
TJH725	182815	Companion	12,000	10,000	Yes	Front	\$218.95
HAJHH	1400920383	Side wind handle					\$21.95
TJP740	017802	Replacement cap for 4" square Bulldog jacks					\$9.99



## Trailer Tarp Kits



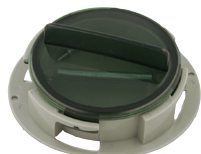
- Complete black mesh tarp kits
- Built for simple dump body and trailer tarp applications
- Heavy duty double-stitched and reinforced hems
- Brass grommets
- Each tarp has a sewn-in rear pocket to fit an optional anti-sail retention bow (sold separately)
- All mounting hardware included

ITEM#	Description	Width	Length	Price
THT6014	Complete Tarp Kit	6'	14'	\$199.95
THT6518	Complete Tarp Kit	6.5'	18'	\$221.95
THT7015	Complete Tarp Kit	7'	15'	\$213.95
THT7018	Complete Tarp Kit	7'	18'	\$224.95
THT7020	Complete Tarp Kit	7'	20'	\$225.95

### Replacement parts

ITEM#	MFG#	Description	Price
THT904	3008010	Adapter shaft for tarp kit	\$8.95
THT905	3008182	Crank roller shaft	\$14.95
THT906	3008191	Spring roll pin, 5/16" x 1 7/8"	\$1.99
THT922	1411000	Bearing for tarp system	\$21.95
THT930	3009501	Detented tarp crank bracket	\$43.95
THT933	3009433	Detent lever for tarp roller	\$13.95
THT938	3009434	Extension spring for tarp kit	\$4.99
THT940	1411915	12T sprocket for tarp kit	\$14.95
THT941	3008176A	7" tarp crank handle assembly	\$26.95
THT950	DTB102	Rear Anti-sail tarp retention	\$126.95

## Document Holder



ITEM#	Description	1-3	4-7	8+
HAD007	Twist Lock Document Holder	\$10.95	\$10.51	\$10.07

## Retract-A-Bar



- Hold loads in standard pickups, large freight trailers, etc.
- Three width adjustment settings: 54"-68", 68"-82", 92"-107"

MALB10	Retract-A-Bar	\$91.95
--------	---------------	---------

## EZ Gate™ Tailgate Assist



- Simple installation
- Reduces lifting by 90%, Reduces injuries & fatigue
- One kit works on gates up to 180 lb
- Side rail height of 10" or more necessary

MT520	EZ Gate™ Tailgate Assist	\$186.95
-------	--------------------------	----------

## Hitch Aligner



- Make trailer hook-up easy.
- Magnetic base telescoping rods sit on the coupler and the ball mount

HABA	Hitch Aligner	\$38.95
------	---------------	---------



## Trimmer Rack

**Free Shipping!**  
Zone A



- Easy snap-in holders with stainless steel springs
- Nylon coated hooks
- Holds three trimmers
- Hardware included, secures with padlock (not included)

**MT530** Lockable Trimmer Rack **\$232.95**

## Trailer Roof Rack

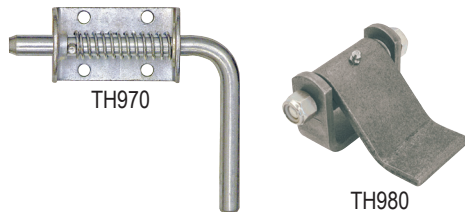


- Aluminum: lightweight, but strong
- Fits trailer widths from 5- 8 ft wide
- Adjustable height for high-roof trailers
- Hardware included

**Free Shipping!**  
Zone A

**MRR20** California Immobilizer Ladder Rack **\$206.95**

## Trailer Door & Gate Hardware



**TH970** ½" Spring Latch Assembly, 5.19"L x 1.75"W **\$10.95**  
**TH980** Formed Hinge Strap with grease zerk **\$13.95**

## Round Rubber Bumper



- 2½" diameter, 1" high
- Protect your trailer from damage from door handles, latches, etc.
- Cushion between ground and loading ramp or lift gate.

**TH902** Round Rubber Bumper **\$5.99**

## Ventadome Roof Vents



MTV230



MTV322



E-Z lift handle is quick and durable

- MTV322 utilizes a new E-Z lift handle with 10 locking positions for fast opening and closing
- Fit 14¼" x 14¼" openings

**MTV230** Traditional turn-knob vent kit **\$56.95**  
**MTV322** New-style E-Z lift vent kit **\$65.95**

## Replacement Ventadome Covers



bottom



MTV220

top



bottom



MTV221

top



bottom

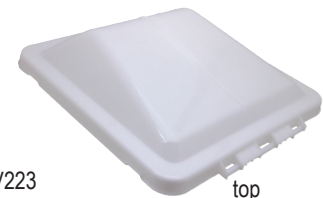


MTV222

top



bottom



MTV223

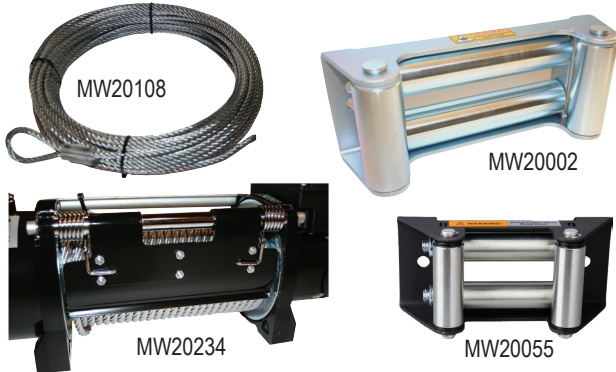
top

**MTV220** Poly, old-style dome-shaped cover **\$33.95**  
**MTV221** Metal, upgrade for old-style dome-shaped cover **\$28.95**  
**MTV222** Poly, wedge-shaped cover (not interchangeable with dome-shape), fits MTV230 **\$32.95**  
**MTV223** Poly, fits new E-Z Lift Ventadome MTV322 **\$37.95**





## Winch Mechanical Parts



MW20108	5/16" x 100' Wire Rope for 8K winches	\$148.95
MW20002	Roller fairlead for 8-12K winch	\$95.95
MW20234	Wire rope tensioner for 8-K & 12K winch	\$56.95
MW20055	Roller fairlead for ATV winches	\$26.95

Winches are designed to pull a static load over a level surface. You must use a snatch block/pulley block to double the line for extreme situations such as a steep grade or axles in the mud, etc.

## Snatch Blocks & Shackles



- Pulley/snatch blocks-Increases your winch's pulling power. Changes direction of pull without damaging wire rope.
- Bow Shackles- safely connects cables, chains, snatch blocks & straps

Snatch Blocks	WLL	Max wire rope size	Price
MW20023	3.2K	5/16"	\$31.95
MW20005	7K	3/8"	\$42.95
MW20049	8K	3/8"	\$70.95
MW20028	12K	1/2"	\$183.95
MW20077	16K	5/8"	\$328.95

Shackles	Body Size	Pin Diameter	WLL	Price
MW20006	5/8"	3/4"	6.5K	\$13.95
MW20020	3/4"	7/8"	9.5K	\$15.95
MW20021	7/8"	1"	13K	\$22.95
MW20117	1"	1 1/8"	17K	\$40.95

## Recovery Straps



- High quality, high capacity, heavy duty polyester strap
- Reinforced loop on each end
- Include sewn on tie cord for storage

MW20029	2"x20'	20K BS/6.7K WLL, recovery strap	\$47.95
MW20030	3"x30'	30K BS/10K WLL, recovery strap	\$74.95
MW20015	3"x10'	30K BS/10K WLL, tree saver	\$40.95

## Mounting Plates



- Mounting plates are built to receive your Bulldog winch
- Provides a mounting surface for the winch and roller fairlead
- 10" x 4 1/2" bolt-hole pattern

MW20011	Fits 2" receiver	\$226.95
MW20155	Similar to MW20011, but has bolt-together design with adjustable handles	\$107.95
MW20008	36 1/4" long by 7 3/8" wide	\$125.95

## Snatch Straps



- High strength nylon fiber with approximately 25% stretch
- Kinetic energy from elasticity aids recovery
- Great for vehicle to vehicle recovery.
- End loops are reinforced

MW20134	19,800 lb BS/10,000 WLL	
MW20231	24,250 lb BS/12,000 WLL	
MW20134	3"x30' Stretchy Snatch Strap	\$114.95
MW20231	7/8"x30' Big Dog Rope w/Camo Storage Bag	\$137.95

## Tow Straps



- MTS301: Safety snap hooks instead of loop, no storage bag
- MTS304: 10% stretch, storage bag included

MTS301	2"x20'	10K BS/5K MVW, tow strap	\$31.95
MTS304	2"x30'	18K BS/9K MVW, tow strap	\$49.95



## Standard Self-Recovery Winches

## Trailer Winches



MW10041



MW10044



MW10043



MW10039



MW10031



MW15017

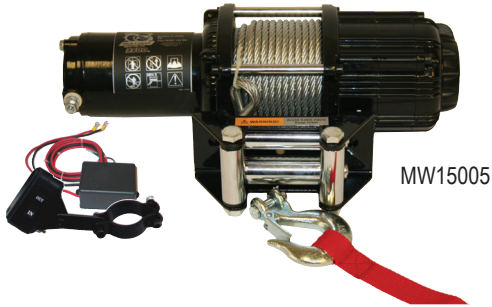
- Power unit can be mounted over drum, over motor, or off winch
- Durable 450 amp sealed contactor switch
- Premium 12V DC series-wound motor powers load in and out
- Controlled with a hand held remote on a 12' cord
- Free spooling clutch for quick wire rope deployment
- Roller fairlead attaches to mounting plate; see page 39
- Automatic load holding brake
- 2 year limited warranty

- Low Profile
- Rope tensioner included for easy rope handling
- 12V DC series-wound motor powers load in and out
- Controlled with a hand held remote on a 20' cord
- Free spooling clutch for quick wire rope deployment
- Roller fairlead deck mounting plate included
- Automatic load holding brake
- 2 year limited warranty
- MW10039 has a new 2-in-1 hand controller that can be unplugged and switched to wireless mode

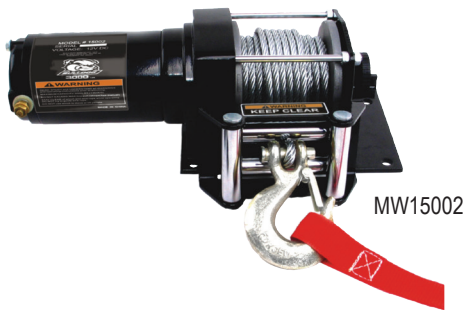
ITEM#	Line Pull Rating	HP	Gear Ratio	Line Speed Line Pull	Rope Style	Price
MW10041	8K	5.2	235:1	22'/0	100' wire	\$508.00
MW10044	8K	5.2	235:1	22'/0	100' synthetic	\$730.00
MW10043	12K	6	265:1	21.3'/0	90' wire	\$695.00

ITEM#	Line Pull Rating	HP	Gear Ratio	Line Speed Line Pull	Rope Style	Price
MW10039	12K	6	265:1	21.3'/0	90' wire	\$954.00
MW10031	7.8K	5.2	218:1	10'/0	47' wire	\$819.00
MW10029	5.8K	1.87	218:1	10'/0	55' wire	\$746.00
MW15019	4.4K	1.8	136:1	19.1'/0	55' wire	\$390.00
MW15017	3.4K	1.5	166:1	15'/0	45' wire	\$331.00

## ATV Winches



MW15005



MW15002

- 12V DC permanent magnet motor powers load in & out
- Controlled by handlebar mounted mini rocker switch
- Free spooling clutch for quick wire rope deployment
- Roller fairlead attached directly to winch
- Includes mounting plate
- Automatic load holding brake
- 2 year limited warranty
- MW15005- Includes handlebar switch & hand-held remote

ITEM#	Line Pull Rating	HP	Gear Ratio	Line Speed Line Pull	Rope Style	Price
MW15005	3.5K	1.6	136:1	9.5'/0	50' wire	\$379.00
MW15002	3K	1.2	153:1	10.5'/0	40' wire	\$213.00
MW15001	2K	1	153:1	10.5'/0	50' wire	\$163.95

## Utility Winch



- Dynamic brake,
- 5/32" x 50' Wire Rope
- 12v DC motor powers load in and out
- 2 bolt mount, 3.15" center to center
- 1 year warranty

ITEM#	Line Pull Rating	HP	Gear Ratio	Line Speed Line Pull	Rope Style	Price
MW15008	2K	1	153:1	10.5'/0	Wire	\$134.00

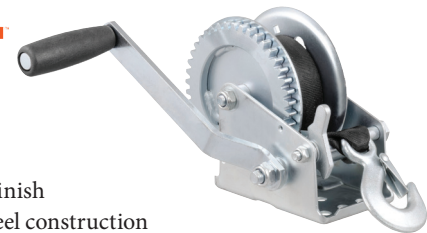
## Deluxe Hand Winch



- Single speed
- Includes 2" x 20' strap with hook
- Heavy Duty but lightweight aluminum construction
- Used in salt water environments & demanding climate applications
- Limited lifetime warranty

ITEM#	Description	Line Pull Rating	Gear Ratio	Price
MWH120	Deluxe Hand Winch	2K	5.1:1	\$164.95

## Hand Winch



- Standard zinc finish
- High quality steel construction

ITEM#	Description	Rating	Gear Ratio	Price
MWH100	Hand Winch with 20' Strap	1,400	4.2:1	\$79.95

## Winch Covers



MW20046/MW20407



MW20190

- Elastic bottom seam secures cover under winch
- Fits most winches with power unit over drum
- Acrylic material for longer UV resistance
- Approximately 9 1/4" high x 22" long x 7 1/2" wide

- MW20190
- Stretches for snug fit
- Fits most winches with power unit over the motor
- Treat with UV protectant spray for longer life
- Approximately 8 3/4" high x 17 3/4" long x 5 3/8" deep

MW20046	Durable Long-Lasting Winch Cover	\$43.95
MW20407	Fits 12K trailer winch (MW10039), Same style as MW20046	\$50.95
MW20190	Soft Winch Cover for Standard Winches	\$31.95

Winches are designed to pull a static load over a level surface. You must use a snatch block/pulley block to double the line for extreme situations such as a steep grade or axles in the mud, etc.



## Replacement Electrical Parts



MW20990	Cover for 8-12K power unit (older style)	\$26.95
MW20178	3-Prong Female Plug for 8-12K old style	\$19.95
MW20315	5-Prong Female Plug for MW10041-44	\$31.95
MW20290	Control Module for MW10041-44	\$195.95
MW20204	Contactor, after around 2014 (newer style) standard recovery & 5.8,7,12K trailer winches	\$99.95
MW20114	Contactor, prior to around 2014 (older style) standard recovery winches	\$104.95
MW20113	Contactor for MW15005	\$46.95

## Wireless Controllers



•MW20156: 100 feet radius. Quick connect plug for popular winches. Includes instructions for hard wiring.

MW20156	Wireless remote control	\$75.95
MW20212	Wireless remote for MW15017/19	\$55.95
MW20099	Wireless remote for MW15001/15002	\$96.95

## Hand Controllers



MW20080	3-prong plug	\$34.95
MW20289	Standard series, 5-pin plug	\$43.95

## Tarps



•Coated on both sides with a polyethylene film  
•Grommets are placed at every corner & approximately every 3' along the sides.

MT0810	8' by 10'	\$9.99
MT1216	12' by 16'	\$18.95
MT1620	16' by 20'	\$31.95

## Premium Wiring Kit



- Premium 2 gauge wire & terminals for ultimate power to your winch
- 100% assembled quick connectors for easy plug-in to your winch
- Wires have ring connector on one end for connection to your battery
- Includes wire-tethered dust connector.

MW20207	24' Long, 100% Assembled	\$423.95
---------	--------------------------	----------

## Wiring Kits



- Includes a set of quick connectors for easy plug-in to your winch
- Wires have ring connector on 1 end for connection to your battery
- 3 gauge wire and terminals, not for use with 15K winches

MW20025	7.5' long (Assembled)	\$88.95
MW20043	16' long	\$175.95
MW20026	24' long (trim to your own length)	\$262.95
MW20018	Set of 2 quick connectors & dust cover	\$37.95

## Tarp Strap Pack

- EPDM Rubber Tarp Straps
- 6 straps included.
- Two each 15", 21", and 31" long



ITEM#	Description	Price
MTS790	Tarp Strap Assortment	\$7.99

## Tarp Straps

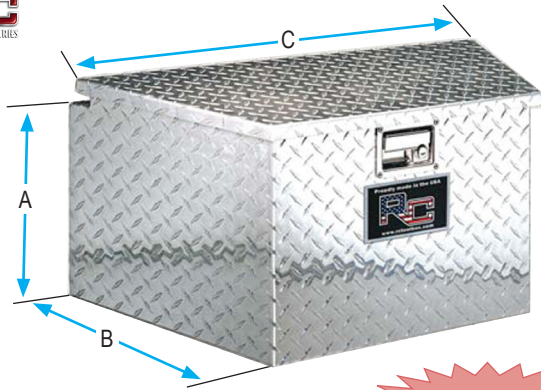


- Made In America
- Industrial EPDM Rubber Tarp Strap

ITEM#	Description	1-9	10-19	20+
MTS701	10" tarp strap	\$1.53	\$1.46	\$1.40
MTS702	15" tarp strap	\$1.89	\$1.81	\$1.73
MTS703	21" tarp strap	\$2.19	\$2.10	\$2.01
MTS704	31" tarp strap	\$2.89	\$2.77	\$2.65



## Trailer Tongue Tool Boxes

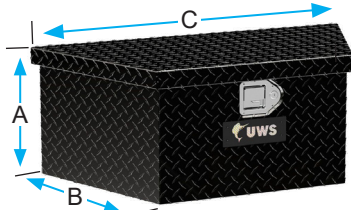


**Free Shipping!**  
(Zone A)

- Smooth steel with black granite coat finish
- Diamond bright aluminum tread plate
- Stainless steel paddle handle with lock
- Full stainless steel hidden hinge
- Recessed hinge allows box to be mounted flat against trailer wall
- Gas spring lid lifter
- Neoprene weather seal

ITEM#	Style	A	B	C	Price
THB324	Black Steel	14	14	30	\$569.95
THB326	Black Steel	20	16	36	\$599.95
THB346	Aluminum	20	16	36	\$699.95

## Trailer Tongue Tool Boxes



THB335

**New!**

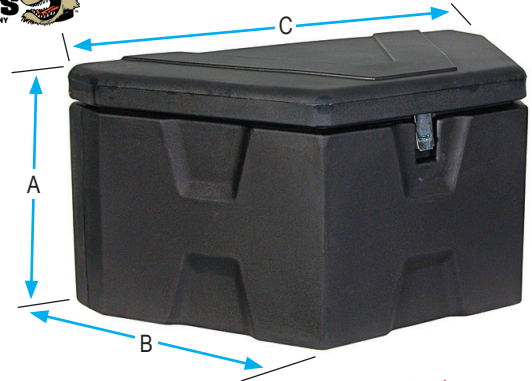


THB334

- Patented RigidCore foam-filled lid
- One piece tub holds heavy tools and cargo
- Stainless steel lock handle & MicroSeal gasket
- Self-opening 90 degree lid
- Assembled in USA
- Limited lifetime warranty (1-year finish, 1-year parts)
- THB334/335 - Low profile provides added clearance

ITEM#	Style	A	B	C	Price
THB334	Aluminum	13	17	34%	\$435.95
THB335	Black Aluminum	13	17	34%	\$543.95
THB336	Aluminum	22	18%	49%	\$561.95

## Poly Tool Box

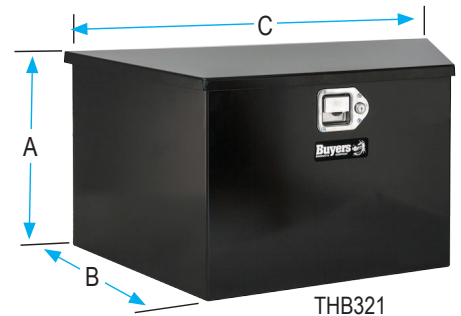


**Free Shipping!**  
(Zone A)

- Zinc Hasp
- Strong double panel lid
- Constructed of rotationally molded high-density polyethylene

ITEM#	Style	A	B	C	Price
THB367	Poly	18	19	36	\$136.95

## Trailer Tongue Tool Boxes



THB321



THB341

**Free Shipping!**  
(Zone A)



- Aluminum tread plate or smooth steel painted black
- Stainless steel paddle handle with lock
- Stainless steel or aluminum continuous hidden hinge

ITEM#	Style	A	B	C	Price
THB321	Black Steel	15	14½	34	\$372.95
THB341	Aluminum	15	14½	34	\$382.95
THB342	Aluminum	18½	15	49	\$455.95
THB932	Mini Tear Drop Latch, 4¾"H x 3¼"W				\$13.95
THB933	Striker Bracket for THB932				\$7.95



## Under body Tool Boxes



**Free Shipping!**  
(Zone A)

- Smooth steel with black finish
- Diamond bright aluminum tread plate
- Rotating T-handle with lock
- Weather seal

ITEM#	Style	A	B	C	Price
THB117	Steel	14	12	24	\$296.95
THB127	Steel	14	16	24	\$296.95
THB144	Steel	15	13	30	\$356.95
THB137	Steel	18	18	24	\$325.95
THB138	Steel	18	18	30	\$362.95
THB139	Steel	18	18	36	\$409.17
THB1394	Steel	18	18	48	\$515.95
THB1396	Steel	18	18	60	\$627.95
THB217	Aluminum	14	12	24	\$366.95
THB227	Aluminum	14	16	24	\$396.95
THB237	Aluminum	18	18	24	\$440.95
THB238	Aluminum	18	18	30	\$470.95
THB239	Aluminum	18	18	36	\$528.14
THB922	Replacement/Upgrade latch, 6"H x 5 7/8"W				\$45.95
THB195	Mounting Bracket, fits 18" or 24" boxes, 2 brackets needed per box				\$89.95

## Tool Box Latch



- Corrosion-resistant stainless steel construction
- Includes installed lock and key set and gasket
- Cam adjusts from 1/4" to 2" for varying door thicknesses
- 4 7/8" H x 4 3/4" W

THB902	T-Handle latch	\$23.95
--------	----------------	---------

## 1" Ratchet Straps



MRS1122



THS671

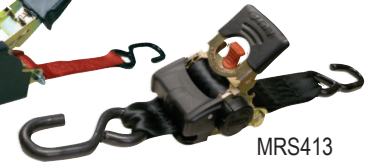
- Round S-hook
- MRS1122- 1,800 lb BS/600 lb WLL
- THS671- 3,300 lb BS/1,100 lb WLL

ITEM#	Description	1-3	4-7	8+
MRS1122	1" by 12' ratchet strap, 2 pk	\$15.95	\$14.95	\$13.95
THS671	1" by 15' ratchet strap, 2 pk	\$29.95	\$28.95	\$27.95

## 1" Retractable Ratchet Straps



MRS303



MRS413

Retractable ratchet automatically winds unused webbing and stores it in the center housing so you have no straps blowing in the wind.

MRS303- 1,200 lb BS, 400 lb WLL

MRS413- 1,500 lb BS, 500 lb WLL

ITEM#	Description	1-3	4-7	8+
MRS303	1" by 10', 2 pack	\$42.95	\$41.95	\$40.95
MRS413	1" by 6', 2 pack	\$38.95	\$37.95	\$36.95

## 1" Strap Packs



THS675



THS674

- THS675- (2) 1"x15' ratchet straps (2) 1"x6' cam buckle straps

THS675	Combo strap pack	4pk	1,200MBS/400WLL	\$34.95
THS674	1"x16' ratchet strap	4pk	1,500MBS/500WLL	\$33.95

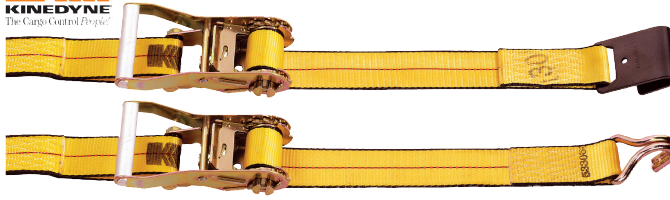
## 1 1/2" Ratchet Straps



- Double J-hook
- 5,000 lb BS/1,667 lb WLL

ITEM#	Description	1-5	6-11	12+
THS670	1.5" by 14' ratchet strap	\$21.95	\$20.95	\$19.95

## 2" Standard Ratchet Straps



- Kinedyne's standard wide handle
- THS226/THS236 have Kinedyne's long wide handle
- 10,000 lb breaking strength / 3,335 lb WLL

ITEM#	Description	1-8	9-15	16+
THS228	2" by 27' Flat Hook	\$25.95	\$24.95	\$23.95
THS229	2" by 27' J-Hook	\$26.95	\$25.95	\$24.95
ITEM#	Description	1-9	10-19	20+
THS226	2" by 27' Flat Hook	\$28.95	\$27.95	\$26.95
THS236	2" by 30' Flat Hook	\$23.95	\$22.95	\$21.95
THS237	2" by 30' J-hook	\$28.95	\$27.95	\$26.95
THS246	2" by 40' Flat Hook	\$41.95	\$40.95	\$39.95
THS247	2" by 40' J-Hook	\$41.95	\$40.95	\$39.95

## 2" Retractable Ratchet Straps



MRS320



MRS416



MRS415



- Retractable ratchet automatically rewinds strap for storage
- Extra webbing stays on reel; no loose ends flapping in the wind
- MRS320- Permanently bolts to trailer, S-hook on end of strap
- MRS416- S-hook on both ends, can be permanently bolted
- MRS415- S-hook on both ends, can be permanently bolted with supplied bolt, large easy-grip ratchet handle and release handle

ITEM#	Description	MBS	WLL	1-3	4-7	8+
MRS320	2" x 5½', pack of 2	4,000	1,333	\$76.95	\$75.95	\$74.95
MRS416	2" x 10', pack of 2	3,300	1,000	\$76.95	\$75.95	\$74.95
MRS415	2" x 10', each	3,000	1,000	\$52.95	\$51.95	\$50.95

## 2" Rhino Max™ Ratchet Straps



- 30% thicker than standard straps
- Tougher surface than standard straps
- 30% more tensile strength after severe abrasion
- Exceeds industry weight ratings! 12,000 lb BS/4,000 lb WLL

ITEM#	Description	1-7	8-15	16+
THS224	2" by 27' Flat Hook	\$50.95	\$49.95	\$48.95
THS225	2" by 27' J-Hook	\$60.95	\$59.95	\$58.95

## 3" Ratchet Straps



- 3" x 30'

ITEM#	MBS	WLL	Hook	1-3	4-7	8+
THS336	16,200	5,400	Flat	\$89.95	\$88.95	\$87.95
THS337	16,200	5,400	Wire	\$104.95	\$103.95	\$102.95

## 4" Ratchet Strap



- 4" x 30'

ITEM#	MBS	WLL	Hook	1-3	4-7	8+
THS436	16,200	5,400	Flat	\$87.95	\$86.95	\$85.95

## Slack Sack



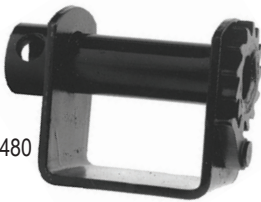
Stores excess 2" webbing in the bag with the ratchet while in use or in storage. Made of durable, water resistant nylon pack cloth.

MTSS	Slack Sack	\$8.99
------	------------	--------

# Winch Binders & Straps



## Winch Binders & Bars



THS480



THS280

ITEM#	Width	MBS	WLL	Description	Price
THS280	2"	10,000	3,333	Pry bar or hex drive	\$23.95
THS480	4"	20,000	6,670	Weld-on, Standard	\$34.95
THS482	4"	20,000	6,670	Weld-on, Storable	\$49.95

## Winch Bars



THS489



THS487

- Knurled non-slip handle and tapered carbon-steel nose piece
- Does not work with THS280

ITEM#	Width	MBS	WLL	Description	Price
THS489	Standard	Winch Bar, Painted			\$26.95
THS487	Combination	Winch Bar, Box End, Chrome			\$41.95

## Sliding Winch Binder & Track



THS472



THS470

THS472	4" Winch Binder, Sliding, Storable, 6,670WLL	\$37.95
THS470	Sliding Winch Track, 6' long, raw Freight extra to zone A/B/C = \$10/\$15/\$20	\$119.95

## Aluminum Sliding Winch Track

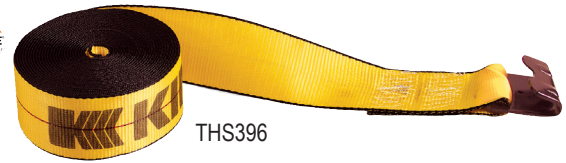


THS471

- 6' long, 4.93" wide, .3" wall thickness

THS471	Aluminum Sliding Winch Track Freight extra to zone A/B/C = \$10/\$15/\$20	\$159.95
--------	--	----------

## Flat Hook Winch Straps



THS396

- THS494: 30% thicker strap & better strength after severe abrasion

ITEM#	Description	WLL	Size	1-9	10-19	20+
THS296	Gold/black	3,335	2" x 27'	\$19.95	\$18.95	\$17.95
THS396	Gold/black	5,400	3" x 30'	\$26.95	\$25.95	\$24.95
THS496	Gold/black	5,400	4" x 30'	\$18.95	\$17.95	\$16.95
THS494	HD Grey Rhino	6,670	4" x 30'	\$29.95	\$28.95	\$27.95
THS498	Gold/black	5,400	4" x 40'	\$36.95	\$35.95	\$34.95

## Strap Winders



THS467



THS467



THS469



THS468



THS469

- THS467- Quickly winds your straps back onto the mandrel of winch
- THS468- Clamps to trailer side rail & quickly winds up 2"-4" straps
- THS469- Fits onto side rail of trailer & winds up 2"-4" straps in either direction.

THS467	Kwik Winder	\$22.94
THS468	Standard Strap Winder	\$34.95
THS469	Premium Strap Winder	\$33.95

## Corner Protector



- 4" wide ID
- Protects straps & cargo

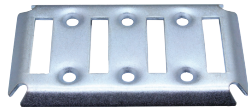
ITEM#	Description	Price
THS930	Plastic Webbing Protector	\$3.99



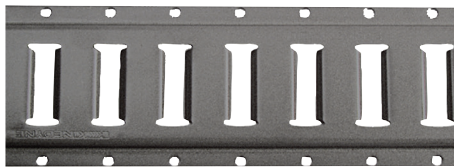
## E-track



THE524



THE504



Portion of THE550



Portion of THE552

- 10' sections LTL freight extra, Zone A/B/C, \$149/\$189/\$209, see pg. 166
- 5' sections can be shipped via FedEx ground for \$10 charge per order
- Order THE524 in multiples of 4 for retail packaging

ITEM#	Orientation	Length	1-5	6-11	12+
THE504	Horizontal	4 slots	\$8.99	\$8.63	\$8.27
THE524	Horizontal	2 feet	\$6.99	\$6.70	\$6.43
THE550	Horizontal	5 feet	\$23.95	\$22.99	\$22.05
THE510	Horizontal	10 feet	\$41.95	\$40.95	\$39.95
THE552	Vertical	5 feet	\$32.95	\$31.95	\$30.95
THE512	Vertical	10 feet	\$62.95	\$60.44	\$57.91

## E-track Mounting Screws



- Zinc-coated screws commonly used to mount e-track

THF220	¼" x 1¼" self-drilling, ⅜" hex head	\$0.69
THF222	¼" x 1½" self-drilling, ⅜" hex head	\$0.79

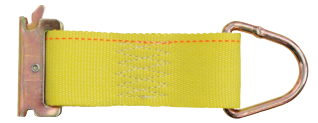
Backup alarm  
See page 140



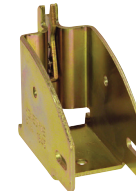
## E-track Accessories



THE412



THE414



THE416



THE418



THE419

- THE414: 3,000 lb BS/1,000 lb WLL
- THE416- Weight limit dependent on lumber used

THE412	Tie-off Ring, 6,000lb BS	\$6.99
THE414	2"x6" Strap with ring	\$5.29
THE416	Board Holder for 2x4 or 2x6 lumber	\$8.99
THE418	J-Hook, 4¼" round	\$12.95
THE419	J-Hook, 2" square	\$10.95

## E-track Ratchet Straps



THE426

THE426	2"x16' Ratchet Strap with 44" lead 3,000 lb BS/1,000 lb WLL	\$15.95
THE425	2"x16' Ratchet Strap with 8" lead 3,500 lb BS/1,165 lb WLL	\$20.95

## E-track Spare Tire Carrier



THE417	E-track Mounted Spare Tire Carrier	\$16.95
--------	------------------------------------	---------





## Wheel Tie Downs

**ERICKSON**  
MANUFACTURING LTD.



MRST22



MRST22

**B/A**  
PRODUCTS CO.



THS832



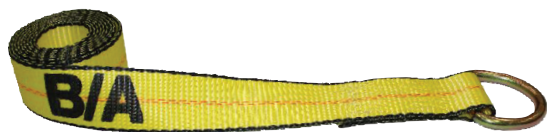
THS822

**KINEDYNE**  
The Cargo Control People!

- Make hauling safe & secure
- MRST22- 2" cam buckle allows webbing to be shortened or lengthened. Heavy 3" web over the top of the tire from one side to the other. Fits tires with overall height of 14" - 29"
- THS832- Swivel J-hook rolling idler style with tire grippers and ratchet
- THS822- Wire J-hook style with tire grippers and ratchet

ITEM#	Description	1-3	4-7	8+
MRST22	Adjustable Wheel Tie Down	\$55.95	\$54.95	\$53.95
THS832	Rolling Idler Wheel Tie Down	\$44.95	\$43.95	\$42.95
THS822	Wire Hook Wheel Tie Down	\$39.95	\$38.95	\$37.95
THS833	Replacement strap only for THS832	\$34.95	\$33.95	\$32.95

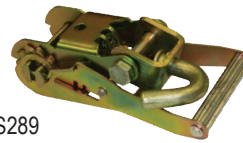
## 2" D-Ring Strap



- 3,330 lb working load
- Simply create a lasso through the wheel or around the axle

ITEM#	Description	1-5	6-11	12+
THS815	2"x8' with D-Ring	\$12.95	\$11.95	\$10.95
THS816	2"x14' with D-Ring	\$22.95	\$21.95	\$20.95

## 2" Finger Hook Ratchet



THS289



THS839

- 2" Wide Ratchet with Forged Finger Hook

ITEM#	Description	Price
THS289	2" Ratchet with Forged Finger Hook	\$43.95
THS839	Finger hook only, 1½" wide	\$14.95

## Roll Back Tie Down Kit



- Complete system includes 4 each of 14' straps with chain, short straps with sewn eyes and ratchets with chain.

THS886	Roll Back Tie Down Kit	\$225.95
--------	------------------------	----------

## 2" Ratchet Strap with Axle Loop

**Hi-Vale**  
**BROPHY**  
Products



MRS208

- 10,000 lb BS/ 3,335 lb WLL
- Adjustable loop built into strap for quick-snap hookup to any axle

ITEM#	Description	1-3	4-7	8+
MRS208	2"x10' Ratcheting Axle Strap	\$37.95	\$36.43	\$34.91

## 2" Ratchet Strap and Axle Strap

**Hi-Vale**  
**BROPHY**  
Products



MRS207

**ERICKSON**  
MANUFACTURING LTD.

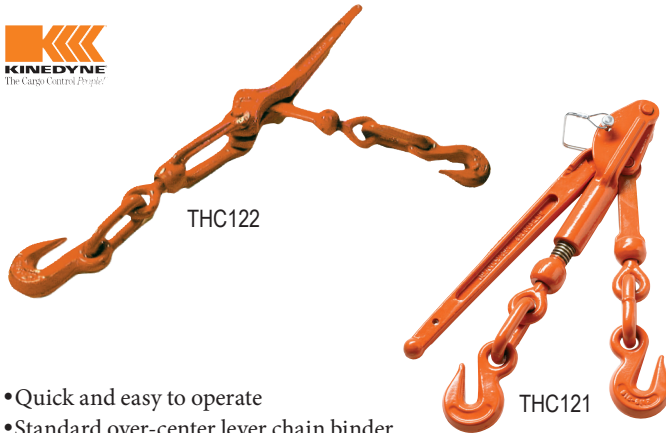


MRSA24

- 10,000 lb BS, 3,335 lb WLL

ITEM#	Description	1-3	4-7	8+
MRS207	2"x8' with Snap Hook	\$33.95	\$32.59	\$31.23
MRSA24	Axle Strap, 2"x24"	\$11.95	\$11.40	\$10.89

## Chain Binders



- Quick and easy to operate
- Standard over-center lever chain binder
- Load binders working load limit must be equal to or greater than working load limit of chain

ITEM#	Description	WLL	1-9	10-19	20+
THC121	5/16" - 3/8" w/ locking pin	5,400	\$58.95	\$57.95	\$56.95
THC122	5/16" - 3/8"	6,600	\$52.95	\$51.95	\$50.95
THC124	3/8" - 1/2"	9,200	\$71.95	\$70.95	\$69.95

## Ratcheting Chain Binders



- Easy to operate
- Lock securely when binding or releasing
- No extra tools necessary
- Load binders working load limit must be equal to or greater than working load limit of chain

ITEM#	Size	WLL	1-9	10-19	20+
THC220	5/16" - 3/8"	5,400	\$44.95	\$43.95	\$42.95
THC222	5/16" - 3/8"	6,600	\$47.95	\$46.95	\$45.95
THC224	3/8" - 1/2"	9,200	\$50.95	\$49.95	\$48.95
THC226	1/2" - 5/8"	13,000	\$81.95	\$80.95	\$79.95

Timbren Suspension Enhancement  
See page 128



## Binder Chain



- G70 grab hooks on each end
- Meets or exceeds all DOT regulations
- Not for overhead lifting or towing

ITEM#	Size	WLL	Grade	1-5	6-11	12+
THC160	5/16" x 8'	4,700	G70	\$49.95	\$48.95	\$47.95
THC161	5/16" x 10'	4,700	G70	\$52.95	\$51.95	\$50.95
THC162	5/16" x 12'	4,700	G70	\$66.95	\$65.95	\$64.95
THC163	5/16" x 16'	4,700	G70	\$63.95	\$62.95	\$61.95
THC165	5/16" x 20'	4,700	G70	\$69.95	\$68.95	\$67.95
THC168	5/16" x 25'	4,700	G70	\$115.95	\$114.95	\$113.95
THC170	3/8" x 8'	6,600	G70	\$61.95	\$60.95	\$59.95
THC171	3/8" x 10'	6,600	G70	\$72.95	\$71.95	\$70.95
THC172	3/8" x 12'	6,600	G70	\$87.95	\$86.95	\$85.95
THC173	3/8" x 16'	6,600	G70	\$89.95	\$88.95	\$87.95
THC175	3/8" x 20'	6,600	G70	\$93.95	\$92.95	\$91.95
THC178	3/8" x 25'	6,600	G70	\$165.95	\$164.95	\$163.95
THC181	1/2" x 10'	11,300	G70	\$157.95	\$156.95	\$155.95
THC183	1/2" x 16'	11,300	G70	\$236.95	\$235.95	\$234.95
THC185	1/2" x 20'	11,300	G70	\$284.95	\$283.95	\$282.95

## Bulk Chain



- Transport G70 chain
- Meets or exceeds all DOT regulations
- Not for overhead lifting or towing

THC282	5/16"	4,700 WLL, price per foot	\$5.09
THC284	3/8"	6,600 WLL, price per foot	\$6.79
THC286	1/2"	11,300 WLL, price per foot	\$13.09

## Twin Clevis



- Safely connect two pieces of chain
- Not for overhead lifting or towing

ITEM#	Size	WLL	Grade	Price
THH117	5/16"	4,700	70	\$7.49
THH118	3/8"	6,600	70	\$11.95



## Weld-On D-Rings



- Weldable mounting bracket is included with each D-Ring.
- MBS- minimum breaking strength •WLL- working load limit
- THR111- Ring is bent at 55° angle to extend from mounting surface

ITEM#	Description	MBS	WLL	1-7	8-15	16+
THR138	3/8" D-Ring	n/a	3,000	\$6.09	\$5.85	\$5.61
THR112	1/2" D-Ring	12,000	4,000	\$6.19	\$5.95	\$5.69
THR158	5/8" D-Ring	18,000	6,000	\$7.59	\$7.29	\$6.99
THR134	3/4" D-Ring	26,000	9,000	\$10.19	\$9.78	\$9.37
THR110	1" D-Ring	46,000	15,000	\$19.95	\$19.15	\$18.35
THR111	1" angled D-Ring	46,760	15,586	\$16.95	\$16.27	\$15.59

## Bolt-On D-Rings



- These rings provide an easy anchor for tie-downs.

ITEM#	Description	MBS	WLL	1-7	8-15	16+
THR214	1/4" D-ring	1.2k	400	\$1.69	\$1.62	\$1.55
THR238	3/8" D-ring	5k	1,600	\$3.69	\$3.54	\$3.39
THR239	3/8" D-ring, Stainless	5k	1,600	\$8.39	\$8.05	\$7.72
THR212	1/2" D-ring	11k	3,666	\$7.79	\$7.48	\$7.17

## Stake Pocket Anchors



- TH998/TH999 will not fit into TH991

ITEM#	Description	1-7	8-15	16+
TH991	1 1/2"x3" bolt-on stake pocket 1/8" thick, 2 1/2" tall	\$7.99	\$7.67	\$7.35
TH990	1 5/8"x3 1/2" weld-on stake pocket 1/8" thick, 3" tall	\$4.69	\$4.50	\$4.32
TH992	1 3/4"x3 1/2" weld-on stake pocket 1/4" thick, 4" tall	\$12.95	\$12.43	\$11.91
TH998	3 1/2" stake pocket tie down, 3/8" ring 5,000 lb B.S. 1,600 lb WLL	\$24.95	\$23.65	\$22.67
TH999	3 1/2" stake pocket tie down, 1/2" ring 11,781 lb B.S. 4,080 lb WLL	\$24.95	\$23.95	\$22.95

## Clevis Grab Hooks



- Not intended for overhead lifting

ITEM#	Size	WLL	Grade	Price
THH132	5/16"	5,400	70	\$8.19
THH134	3/8"	7,500	70	\$10.09
THH136	1/2"	11,300	70	\$25.95

## Clevis Slip Hook with Latch



- Not intended for overhead lifting

ITEM#	Size	MBS	WLL	Grade	Price
HAC70	1/4"	7,800	2,600	43	\$6.99
HAC72	5/16"	18,800	4,700	70	\$10.95
HAC73	3/8"	26,400	6,600	70	\$13.95
HAC74	1/2"	33,900	11,300	70	\$29.95

## Weld-on Grab Hooks



- Not for towing or overhead lifting

ITEM#	Size	WLL	Grade	Price
THH126	5/16"	4,700	70	\$8.30
THH128	3/8"	6,600	70	\$13.27

## Anchor Points



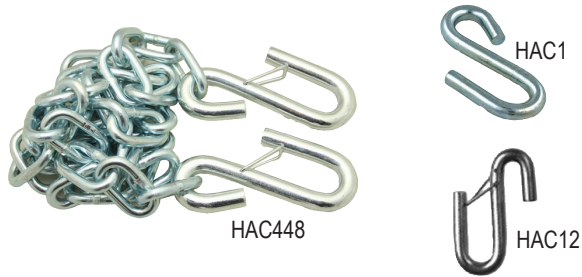
- These rings provide an easy anchor for tie-downs.

ITEM#	Description	MBS	WLL	1-7	8-15	16+
THR318	Recessed tie-down	6k	2,000	\$6.99	\$6.71	\$6.43
THR914	Backing Plate for THR318			\$6.49	\$6.23	\$5.97
THR315	Swivel rope ring kit	6k	2,000	\$25.95	\$24.91	\$23.87
THR310	Rope Ring	1.5k	500	\$4.49	\$4.31	\$3.77





## S-Hook Safety Chains



• Safety chain ratings are per pair but sold individually

ITEM#	Description	Rating	1-5	6-11	12+
HAC448	4' long, 2 S-hooks	5,000	\$20.95	\$20.11	\$19.27
HAC1	S-hook only	5,000	\$4.29	\$4.12	\$3.95
HAC12	S-hook with latch	5,000	\$3.99	\$3.83	\$3.67

## Slip-Hook Safety Chains



• Safety chain ratings are per pair but sold individually

ITEM#	Description	Rating	Price
HAC66	¼" x 37"	7,800	\$16.95
HAC76	⅝" x 37"	18,800	\$24.95
HAC86	⅜" x 38"	26,400	\$34.95
HAC96	½" x 42"	45,200	\$63.99

## Coiled Safety Cables



• Black HD PVC coated stranded cable  
 • Safety cable ratings are per pair but sold individually

ITEM#	Description	BS Rating	Price
HAC425	36" S-hook with safety latch	7,000	\$19.95
HAC429	48" Clevis Hook w/safety latch	10,000	\$30.95
HAC427	40" Clevis Hook w/safety latch	12,000	\$40.95

## Threaded Link



• Threaded links are not DOT approved for safety chain use.

ITEM#	Description	MBS	WLL	1-5	6-11	12+
HAQL14	¼" threaded link	5,200	1,300	\$1.89	\$1.81	\$1.74
HAQL516	⅝" threaded link	7,040	1,760	\$2.79	\$2.67	\$2.56
HAQL38	⅜" threaded link	10,560	2,640	\$5.29	\$5.07	\$4.87

## Snap Hook



ITEM#	Description	Price
HAQL38	⅜" Snap hook, 2,000 MBS	\$2.99

## Safety Chain Clip



• Weld to trailer frame to securely hold safety chain

ITEM#	Description	Price
HAC142	Clip for ⅜" safety chain	\$6.29
HAC144	Clip for ½" safety chain	\$6.89

## Safety Chain Retainer



• Forged steel  
 • Easier chain replacement  
 • No masking chains when painting

HAC146	⅝" Weld-on Safety Chain Retainer	\$9.99
HAC148	⅜" Weld-on Safety Chain Retainer	\$11.99



WeighSafe Aluminum Adjustable Ballmount with built-in scale  
 See page 10