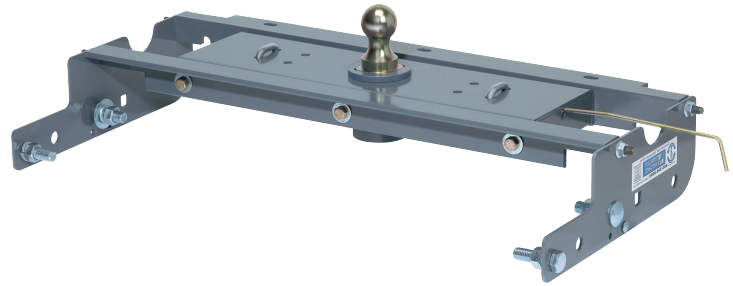


# B&W Turnover Ball



- 30,000 GTW/ 7,500 TW
- 2<sup>5</sup>/<sub>16</sub>" ball stores in-bed (unless noted)
- No bed removal required to install
- Limited Lifetime Warranty



<b>Application Chart</b> (NO Cab & Chassis trucks)	<b>Complete Kit</b>	<b>Price</b>	<b>Footnotes</b>
<b>Chevrolet/GMC Full Size Pickup,</b>			
88-98 1500 Long Bed	HGT1000	\$599.00	<b>c</b>
99-07 1500/2500 LD ('99-'01 NBS) (tube frame changing to C-channel before axle)	HGT1059	\$599.00	<b>c,g</b>
07-18 1500 Long Bed, '07 Boxed Frame	HGT1007	\$599.00	<b>c,g</b>
07-19 1500 Short Bed, '07 Boxed Frame, ('19 Chevy LD & GMC Limited only)	HGT1057	\$599.00	<b>c,g</b>
19-22 1500 (Except '19 Chevy LD & GMC Limited) (Except Carbon Pro Bed)	HGT1019	\$599.00	<b>c</b>
88-00 2500HD/3500HD Long Bed, Full C-Channel Frame	HGT1000	\$599.00	<b>c</b>
01-10 2500 HD	HGT1067	\$599.00	<b>c,g,q</b>
01-07 3500 HD ('07- 2 bed cross members over axle)	HGT1062	\$599.00	<b>c</b>
07-10 3500 HD, New Body Style ('07- One bed cross member over axle)	HGT1067	\$599.00	<b>c,g,q</b>
11-15 2500/3500	HGT1012	\$599.00	<b>c</b>
16-19 2500/3500 (Without 5 factory holes in truck bed)	HGT1016	\$599.00	<b>c,g</b>
20-22 2500/3500 (Without 5 factory holes in truck bed) (except Carbon Pro Bed)	HGT1020	\$699.00	<b>c</b>
<b>Dodge Full Size Pickup,</b>			
73-93 1500/2500/3500	HGT1300	\$599.00	
94-02 1500/2500/3500 No '02 1500	HGT1394	\$599.00	<b>c</b>
02-08 1500 No Mega Cab	HGT1316	\$599.00	<b>c,g</b>
09-20 1500 ('19-20 1500 Classic only)	HGT1309	\$599.00	<b>a,c,h</b>
19-22 1500, Gas engine (Except Classic)(Except TRX)	HGT1319	\$599.00	<b>c</b>
06-12 1500/2500/3500 Mega-Cab & '10-'12 2500/3500 Gas	HGT1308	\$599.00	<b>c,g</b>
03-12 2500/3500 No Mega-Cab, No '10-'12 2500/3500 Gas	HGT1313	\$599.00	<b>c,g</b>
2013 2500 No Mega-Cab, No Gas	HGT1313	\$599.00	<b>c,g</b>
2013 2500 Mega-Cab, Also fits Gas	HGT1308	\$599.00	<b>c,g</b>
13-18 3500 (Without 5 factory holes in truck bed)	HGT1314	\$599.00	<b>c</b>
14-18 2500 (Without 5 factory holes in truck bed)	HGT1384	\$599.00	<b>c</b>
19-22 2500/3500 (Without 5 factory holes in truck bed)	HGT1320	\$599.00	<b>c</b>
<b>Ford Full Size Pickup</b>			
80-98 250/350, Without overload springs (Except 250 LD)	HGT1100	\$599.00	<b>c</b>
80-98 250/350, With overload springs	HGT1110	\$599.00	<b>r</b>
97-04 150/250 LD ('04 old body style only)	HGT1197	\$599.00	<b>t</b>
04-14 150 (Except '04 old body style)	HGT1104	\$599.00	<b>c</b>
15-22 150 (Except Raptor & Lightning & '19-'20 Limited)	HGT1121	\$599.00	<b>c</b>
99-10 250/350 SD	HGT1108	\$599.00	<b>c</b>
08-10 F450 SD with factory installed bed	HGT1108	\$599.00	<b>c,w</b>
11-16 F250/350/450 SD with factory installed bed (Without 5 factory holes in truck bed)	HGT1111	\$599.00	<b>c</b>
17-22 F250/350/450 SD with factory installed bed (Without 5 factory holes in truck bed)	HGT1116	\$699.00	<b>c</b>
<b>Toyota Tundra</b>			
07-21 (ball cannot be turned over and stowed in hitch, also see footnote a)	HGT1257	\$599.00	<b>a,c,q</b>



**Footnotes:**

- Most applications: cut or remove heat shield
- a.** HGT1257 and HGT1309 will not accept standard B&W ball, accessories, or 5<sup>th</sup> wheels. Please call for options.
  - c.** No frame drilling required
  - g.** Notch out lip where fender & bed floor join
  - h.** In-bed ball latch
  - q.** Lower exhaust on some trucks (brackets included)
  - t.** May need to drill one 7/16" hole/side
  - r.** Loosen bed bolts and drill one 1/2" hole/side
  - w.** Relocate brake and fuel lines, permanently lower exhaust, bracket provided
  - z.** Loosen and/or remove bed bolts and drill two 9/16" holes per side



## Companion 5<sup>th</sup> Wheel



OEM compatible  
Companions  
are listed on  
pages 119-121.

**Free  
Shipping!**  
(zones A, B, C)

- Fits into B&W Turnoverball® hitches
- 20,000 GTW / 5,000 VTW
- 3 height adjustments from 14¾" to 16¾"
- 3 horizontal adjustments from 2½" to 6½" from ball socket
- Fully articulating head allows front/back and side/side pivoting
- Not compatible with REESE Side winder pin box
- Will NOT work with HGT1257 and HGT1309 B&W Turnoverball®

HGT3500 Companion 5<sup>th</sup> wheel \$1099.00

## Companion Slider 5<sup>th</sup> Wheel



**Free LTL  
shipping!**  
(see pg. 166)

- Fits into B&W Turnoverball® hitches
- 20,000 GTW / 4,500 VTW
- 3 height adjustments from 14¾" to 16¾"
- 3 horizontal adjustments from 2½" to 6½" from ball socket
- Fully articulating head allows front/back and side/side pivoting
- Not compatible with REESE Side winder pin box
- Will NOT work with HGT1257 and HGT1309 B&W Turnoverball®

HGT3405 Companion 5<sup>th</sup> wheel Slider \$1,599.00

## B&W Turnoverball® Universal Mount



- 6" by 8" plate
- ½" lip for truck bed

HGT1500 Universal Turnoverball® \$214.95

## Flat Bed Companion 5<sup>th</sup> Wheel



**Free  
Shipping!**  
(zones A, B, C)

- Fits into B&W Turnoverball® hitches
- 25,000 GTW / 6,250 VTW
- Fixed height of 10½"
- Footprint 17¼" wide by 18" deep
- Fully articulating head allows front/back and side/side pivoting
- Not compatible with REESE Side winder pin box
- Will NOT work with HGT1257 and HGT1309 B&W Turnoverball®

HGT3050 Companion 5<sup>th</sup> wheel for flatbed \$999.00

## Replacement Parts & Accessories



Top View

HGT1710

HGT1715

HGT9990

HGT2000

HGT4085

HG30033

HGT4000

HGT1710 Cover for stowed Turnoverball® \$16.95

HGT1715 Cover for empty Turnoverball® socket \$16.95

HGT9990 Replacement safety chain attachment kit \$37.95

• Items below will NOT work with HGT1257 and HGT1309 B&W Turnoverball® hitches. Call for options for those hitches.

HGT2000 Replacement Turnoverball®, 30K \$111.96

HGT4085 4" Offset Ball, 20K \$190.95

HGT2050 1" Hi-Rise Ball, 20K \$161.95

HG30033 WeighSafe Ball with tongue weight scale \$239.00

HGT4000 King Pin, 30K \$190.95

## X5 Adapter



- Converts from B&W Turnover Ball hitch to standard bed rails
- Not compatible with REESE Side winder or other rotating pin boxes
- Will not fit B&W HGT1257 & HGT1309
- Will not fit RAM 2013 and newer
- Will not fit trucks with aluminum beds
- Bed liners and bed mats may affect the fit of HG16310

HG16310 X-5 Adapter for up to 20K 5th Wheel \$670.95

# Draw-Tite Gooseneck



## Hide-A-Goose™

- 30,000 GTW, 7,500 TW
- 2<sup>5</sup>/<sub>16</sub>" ball stores in-bed (unless noted)
- No alteration of OE exhaust required
- No bed removal required to install
- Rail kit ratings match vehicle weight ratings
- Magnetic hole cover included
- Spring loaded safety chain loops included
- Limited Lifetime Warranty



<b>Application Chart</b> (NO Cab & Chassis trucks)		Complete Kit	Price	Foot- notes
<b>Chevrolet/GMC Full Size Pickup,</b>				
99-19	1500 (19 Old Body Style only), Except MagneRide or Carbon Pro bed	HG6554	\$489.00	c,g,h
99-04	2500 LD 6.6' bed	HG6554	\$489.00	c,g
99-04	2500 LD 8' bed	HG6534	\$499.00	c
01-10	2500 HD	HG6534	\$499.00	c
01-07	3500 8' bed (07 classic)	HG6545	\$485.00	c
07-10	3500 (07 NBS only)	HG6534	\$499.00	c
11-19	2500/3500 HD (Without 5 factory holes in truck bed)	HG6556	\$489.00	c,g
<b>Dodge Full Size Pickup,</b>				
94-02	1500/2500/3500, Except 02 1500	HG6039	\$519.00	c
13-18	3500 HD (Without 5 factory holes in truck bed)	HG6476	\$529.00	c,x
14-18	2500 HD (Without 5 factory holes in truck bed)	HG6477	\$529.00	c,k,x
<b>Ford Full Size Pickup</b>				
99-16	F250/350/450 SD (Without 5 factory holes in truck bed)	HG6049	\$499.00	c
17-22	F250/350/450 (Without 5 factory holes in truck bed)	HG6894	\$669.00	c,x
<b>5<sup>th</sup> wheel Hitch</b>				
18K Under-Bed Gooseneck 5 <sup>th</sup> Wheel Conversion, 4.5K PW Will not fit HG6894/6477/6476 (Freight extra to zone A/B/C = \$59/\$79/\$99)		HG6981	\$1089.00	c,d

### 5<sup>th</sup> Wheel

Convert a Hide-A-Goose™ or B&W Turnover Ball Gooseneck hitch to 5<sup>th</sup> Wheel

- 18K GTW/ 4.5K pin weight capacity
  - 4-way pivoting head
- 4° side-side pivot for better control
  - 14<sup>1</sup>/<sub>4</sub>-18" height adjustment
- Lockable, extendable length handle
  - 2 bolts for bed height adjustment
  - 2 year limited warranty



#### Footnotes:

Most Applications: Cut or remove Heat Shield

c. No frame drilling required

g. Notch out lip where fender & bed floor join

h. May require offset ball HG6908 on trucks with less than 6ft long bed

d. Not compatible with REESE Side winder

k. Rated to 20,000 GTW/5,000 TW

x. Latch is built into ball; ball cannot be stored inverted in hitch

### Replacement Parts & Accessories



HG6906



HG6908



HG6909

HG6906	1" Rise Ball, 20K rated	\$195.95
HG6908	Ball w/ 5" offset	\$309.95
HG6909	Standard Replacement Ball	\$139.95



# CURT Folding Ball Gooseneck

## Folding Ball Gooseneck



- 30,000 GTW / 7,500 lb TW
- Durable carbide powder coat finish
- Easy to follow installation instructions
- Easy access to grease fittings
- Stainless steel pivot spring and safety pin
- Cutting templates (paper template included)
- U-bolt safety chain hook-ups
- No tools needed to fold

HGFD	Folding ball gooseneck hitch	\$241.95
HGFP123	Replacement T-handle & pin	\$13.95
HGFDU	Replacement safety chain U-bolts	\$18.95

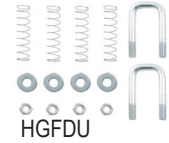
## Folding Ball Install Kits



- 30,000 GTW
- Rust-resistant liquid Bonderite® coating
- Vehicle-specific design optimizes strength and install time
- All 2WD trucks need clearance check when truck is loaded & unloaded to verify inverted ball won't hit differential.

Application Chart (NO Cab & Chassis trucks)	ITEM#	Price	Frame Drill
<b>Chevrolet/GMC Full Size Pickups</b>			
99-07 1500/2500 Light Duty , 07 Classic only	HGF341	\$405.95	No
01-10 2500/3500 Heavy Duty	HGF341	\$405.95	No
11-19 2500/3500 Heavy Duty (Without 5 factory holes in truck bed)	HGF301	\$265.95	No
<b>Dodge Full Size Pickups</b>			
94-02 1500/2500/3500 (except '02 1500)	HGF509	\$269.95	
<b>Ford Full Size Pickups</b>			
99-16 F250/350 Super Duty, 08-11 F450 w/ factory bed (Without 5 factory holes in truck bed)	HGF332	\$315.95	No

## Fixed Ball Gooseneck Plate



- 30,000 GTW
- Mounting hardware included
- Safety chain U-bolts sold separately
- Fits CURT folding ball install kits

HGFP	Fixed ball gooseneck hitch	\$169.95
HGFDU	Safety chain U-bolt kit	\$18.95

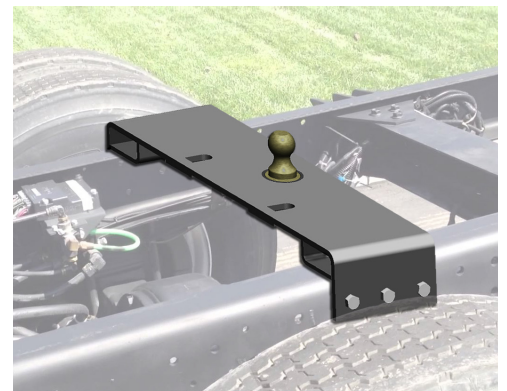
## Fold-down Gooseneck



- 30,000 GTW
- Forged safety chain attachments lay flush with plate when stored
- Locking pin secures ball in upright position

HGF02	Fold-down gooseneck hitch	\$219.95
-------	---------------------------	----------

## Cab & Chassis Flip Over Gooseneck Hitch



- Includes standard 2 5/16" gooseneck ball
- Designed to fit 34" wide cab & chassis frames
- 2" of lift above truck frame for exhaust clearance
- Rotate spring-loaded handle pin to release ball
- Ball stows inverted out of the way in the socket
- Rated for 30,000 GTW and 7,500 TW

HGP203	Cab & Chassis Flip-Over Gooseneck	\$729.95
--------	-----------------------------------	----------



## Gooseneck Spyder



HG16085

HG50223

- 20 3/4" wide
- Includes safety chain hookups
- 4 attaching pins & clips included
- Easy 4-pin installation & removal allows full access to bed
- Mounts to most 5thwheel rails including HG16200
- Durable black carbide finish resists rust & corrosion
- Use HG50223 if your state does not allow safety chains to be attached to the ball plate.

HG16085	Spyder Gooseneck, 25K GTW, 6,250 TW	\$339.95
HG16090	Spyder Gooseneck, 30K GTW, 7,500 TW	\$423.95
HG50223	Safety Chain Bracket Kit	\$119.95
HG5163	4 Replacement Attaching Pins & Clips	\$14.95

## Gooseneck Plate



HG16055

HG50223

- 25,000 GTW
- Built-in Safety chain hookups
- 4 attaching pins & clips included
- Easy 4-pin installation & removal allows full access to bed
- Mounts to most 5thwheel rails including HG16200
- Durable black carbide finish resists rust & corrosion
- Can be flipped to provide 3" rearward offset from axle
- Use HG50223 if your state does not allow safety chains to be attached to the ball plate.

HG16055	Gooseneck Bent Plate, 10" wide, 6,250 TW	\$229.95
HG50223	Safety Chain Bracket Kit	\$119.95
HG5163	4 Replacement Attaching Pins & Clips	\$14.95

## Safe Load Gooseneck Plate



- Built-in tongue weight scale
- Fits industry standard rails
- 30,000 GTW, 7,500 TW
- 2 3/16" stainless steel ball

HG16052	Safe Load Gooseneck Plate	\$349.00
---------	---------------------------	----------

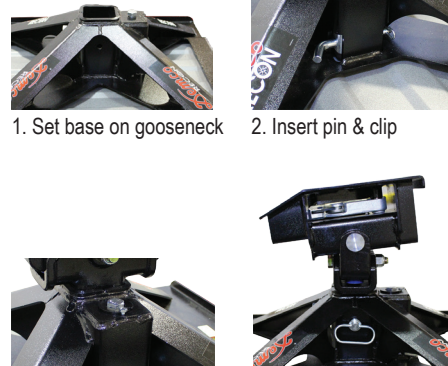
## Gooseneck Mounted 5<sup>th</sup> Wheel



MADE in USA!



### Easy install!



1. Set base on gooseneck

2. Insert pin & clip

3. Tighten torque bolt

4. Insert & pin head

- Unique mounting design fits most 2 5/16" gooseneck balls
- Light weight, two-piece geometric design (only 135 lbs total)
- Wrap-around jaw design with lock bar for more secure towing
- Fully articulating head allowing front/back and side/side pivoting
- 3 height adjustments from 15 1/2" to 18"
- 21,000 GTW
- Not compatible with REESE Side winder pin box
- Freight extra to zone A/B/C: \$59/\$79/\$99

HG50045	21K Gooseneck Ball Mounted 5 <sup>th</sup> Wheel	\$839.00
---------	--	----------

## Weldable Gooseneck Plates



HGP005



HGP002

- Underbed reinforcement required to reach maximum GTW rating.

HGP005	Gooseneck plate with D-rings, 16"x 16"x 3/8"	\$148.95
HGP002	Gooseneck plate with D-rings, 13"x 48"x 3/8"	\$255.95



## Patriot 5<sup>th</sup> Wheels



**Free Shipping!**  
(zones A, B, C)

- Side to side pivot with spring cushioning
- Fully articulating head allowing front-back and side-side pivoting
- Bed rails sold separately
- HGT3200- 16-19" height adjustments
- HGT3255- 1-piece base design for easier installation & more strength
- HGT3270- Not compatible with HG16027
- HGT3270- 12" of slide, 17"-19" height adjustment

HGT3200	16K Patriot	4,000 PW	\$699.00
HGT3255	18K Patriot	4,500 PW	\$799.00
HGT3270	18K Patriot Slider	4,500 PW	\$899.00
HGT3210	Bed Rails for Patriot 5th wheel		\$130.00

## CURT Q-series 5<sup>th</sup> Wheels



**Free Shipping!**  
(zones A, B, C)

HG16546

- Two-pin head removal
- Includes 10" lube plate #HG5LP
- Self-aligning head for easy hookups
- Dual jaws provide 360° pin contact
- Spherical axial bearing ensures smooth, quiet towing
- Lock indicators visible from vehicle cab
- Use custom quick install brackets for enclosed boxed frames
- Rails sold separately: HG16200 or HG16204
- Rolls 12". Non-binding rod-guide feature
- Limited lifetime warranty
- Not compatible with REESE Side winder pin box

ITEM#	GTW	PW	3 Height Positions	Price
HG16546	24K	6,000	17½ - 21½" roller	\$1,505.95

## CURT PowerRide™ 5<sup>th</sup> Wheels



- Professional-grade 5th wheel towing power!
- Fast, one pin head removal
- Integrated wear plates for smooth operation and no grease
- Ergonomic, self-resetting handle for easier use from the side
- Multi-directional, cast yoke head for smooth ride
- Interlocking cast jaws fully wrap the kingpin
- Cast steel main body for dependable strength
- Three-position coupling indicator clearly shows coupling status
- Strategic grip points for ergonomic moving and handling
- Premium, textured, dark gray teridium finish
- Use custom quick install brackets for enclosed boxed frames.
- Rails sold separately: HG16200 or HG16204
- Limited lifetime warranty
- Compatible with REESE Side winder pin box
- **HG16205:**

Rated for 40,000 lbs. GTW

Industry-standard mounting point to accept most 5th wheel hitches

Designed for use with custom 5th wheel brackets (sold separately)

ITEM#	GTW	PW	4 Height Positions	Price
HG16320	30K	7,500	13" to 17"	\$1,203.95
HG16205	Bed rails (Quick install brackets sold sep.)			\$217.95

## 5<sup>th</sup> Wheel Lube & Grease



Lube Plate



Grease Packet

HG5LP	10" Lube Plate	\$11.95
HG5LPL	Reese Elite™ 12" Lube Plate	\$14.95
HG5199	2oz Permatex 5 <sup>th</sup> Wheel Grease Packet	\$1.95



Trimax Coupler Locks  
See page 30



## 5<sup>th</sup> Wheel Quick Install Brackets



- Brackets custom fitted to your truck frame.
- Reduces install time up to 50%
- Does not include bed rails or 5th wheel hitch
- Frame and bed rail mounting hardware included
- Fits most standard 5th wheel rails
- No Cab & Chassis trucks
- Available for Nissan Titan & Toyota Tundra, please call
- Beds must be at least 6' long

Application Chart (no Cab & Chassis trucks)		ITEM#	Price	Frame Drill
<b>Chevy/GMC Full Size Pickup</b>				
99-07	1500 (07 Classic only)	HG16418	\$234.95	
07-19	1500 (19 Legacy only)	HG16400	\$272.95	no
01-10	2500/3500 (99-04 2500LD)	HG16418	\$234.95	
11-19	2500/3500 (Without 5 factory holes in truck bed)	HG16411	\$176.95	no
20-23	2500/3500 (Without 5 factory holes in truck bed)	HG16429	\$237.95	
<b>Dodge/RAM Full Size Pickup</b>				
02-08	1500 except Mega Cab	HG16419	\$396.95	no
06-08	1500 Mega Cab only	HG16420	\$198.95	no
09-18	1500 Coil springs only, except limited	HG16306	\$149.95	
13-17	1500 With factory air suspension	HG16444	\$293.95	no
19-22	1500 Classic	HG16306	\$149.95	
19-22	1500 (Excluding multifunction tailgate)	HG16307	\$253.95	no
03-12	2500/3500 Inc Mega Cab	HG16420	\$198.95	no
2013	2500 (Without 5 factory holes in truck bed)	HG16430	\$201.95	
14-22	2500 (Without 5 factory holes in truck bed)	HG16427	\$218.95	no
13-22	3500 (Without 5 factory holes in truck bed)	HG16430	\$201.95	
<b>Ford Full Size Pickup</b>				
04-14	F150/250 LD (04 New Body Style only)	HG16441	\$171.95	no
15-20	F150 (Excluding Police Responder)	HG16442	\$298.95	no
21-22	F150 (Excluding Police Responder)	HG16911	\$283.95	
99-04	F250/350 Super Duty,	HG16443	\$201.95	
05-10	F250/350 & 08-10 F450 (no Cab & Chassis)	HG16448	\$179.95	
11-16	F250/350 (11-15 F450 no Cab & Chassis) (Without 5 factory holes in truck bed)	HG16424	\$199.95	no
17-22	F250/350/450 (Without 5 factory holes in truck bed)	HG16428	\$262.95	no

## CURT A-series 5<sup>th</sup> Wheels



- Fast, one pin head removal
- Includes 10" lube plate #HG5LP
- Fully-articulating torsion head for controlled coupling
- Interlocking cast jaws fully wrap the kingpin
- Cast yoke and poly torsion inserts suppress shock and noise
- Lock indicators visible from vehicle cab
- Rails sold separately: HG16200 or HG16204
- Use custom quick install brackets for enclosed boxed frames.
- HG16521 & HG16541 rolls 12". Non-binding rod-guide feature
- Limited lifetime warranty
- Compatible with REESE Side winder pin box

ITEM#	GTW	PW	3 Height Positions	Price
HG16120	16K	4,000	13 - 17"	\$656.95
HG16140	20K	6,000	13 - 17"	\$898.95
HG16180	25K	6,250	13 - 17"	\$948.95
HG16521	16K	4,000	17½" - 21½" roller	\$1116.95
HG16541	20K	5,000	17½" - 21½" roller	\$1,356.95

## 5<sup>th</sup> Wheel Rails



- Fits most 5th wheels hitches with standard foot print
  - Can be used with quick install bracket kits
  - HG16204/16200: 25K rated
- |         |  |          |
|---------|--|----------|
| HG16204 | Bed Rails (Quick-install brackets sold sep.) | \$110.95 |
| HG16200 | Bed Rails & Universal L-bracket kit          | \$168.00 |
| HG16101 | Replacement L-bracket kit with hardware      | \$125.95 |
| HG5163  | 4 Replacement Pins & Clips for 5th Wheel     | \$14.95  |



# Ford OEM-Compatible Options

## 5<sup>th</sup> Wheels



HG16039

**Free Shipping!**  
(zones A, B, C)



HGT3305



HG30922

- Designed to fit Ford trucks with factory holes in the bed
- HG16039: 3 height adjustments from 13" to 17"
- HGT3300/3305: 3 height adjustments from 16¾" to 18¾"
- HG30922/30940: 3 height adjustments from 14" to 18"

HG16039	25K CURT 5 <sup>th</sup> wheel	6,000 PW	\$1,202.95
HGT3300	20K B&W Companion™ 5 <sup>th</sup> wheel	5,000 PW	\$1,199.00
HGT3305	25K B&W Companion™ 5 <sup>th</sup> wheel	6,250 PW	\$1,399.00
HG30922	27K Reese® M5™ 5 <sup>th</sup> wheel	6,750 PW	\$1,490.00
HG30940	32K Reese® M5™ 5 <sup>th</sup> wheel	6,400 PW	\$1,639.00

## Puck to Standard Rail Adapter



**Free Shipping!**  
(zones A, B, C)

- Designed to fit Ford trucks with factory holes in the bed
- Provides industry-standard rails accepting most 5th wheel hitches
- Not compatible with B&W Patriot slider fifth wheels

HG16027	25K adapter to standard 5 <sup>th</sup> wheel rails, 6,250 PW	\$424.95
---------	---	----------

## Ball Kits



HG30010



HG30061



HG30137



HG30031

- Designed to fit Ford trucks with factory holes in the bed
- HG30061: Handle keeps hands clean and serves as ball latch
- HG30031: Built-in hydraulic tongue weight scale

HG30010	30K CURT ball kit	\$239.95
HG30016	38K CURT ball kit	\$259.95
HG30137	30K Reese® Elite™ ball kit	\$299.95
HG30061	30K B&W ball kit	\$299.00
HG30031	30K WeighSafe ball kit	\$299.00

## Short Bed 5<sup>th</sup> Wheels



HG16678

**Free Shipping!**  
(zones A, B, C)



HGT3370

**Free LTL shipping!**  
(see pg. 166)

- Designed to fit Ford trucks with factory holes in the bed
- HG16678: 3 height adjustments from 17½" to 21½"
- HGT3370: 3 height adjustments from 16¾" to 18¾"

HG16678	24K CURT 5 <sup>th</sup> wheel roller, 6,000 PW	\$1,699.00
HGT3370	20K B&W Companion™ 5 <sup>th</sup> wheel slider, 5,000 PW	\$1,699.00





## 5<sup>th</sup> Wheels



HG16049

**Free Shipping!**  
(zones A, B, C)



HGT3600

**Free LTL shipping!**  
(see pg. 166)



HG30919

**Free Shipping!**  
(zones A, B, C)

- Designed to fit Dodge trucks with factory holes in the bed
- HG16049/30919: 3 height adjustments from 14" to 18"
- HGT3600: 3 height adjustments from 17" to 19"

HG16049	25K CURT 5 <sup>th</sup> wheel	6,250 PW	\$1261.95
HGT3600	25K B&W Companion™ 5 <sup>th</sup> wheel	6,250 PW	\$1,399.00
HG30919	27K Reese M5™ 5 <sup>th</sup> wheel	6,750 PW	\$1,490.00

## Puck to Standard Rail Adapter



HG30154

**Free Shipping!**  
(zones A, B, C)

- Designed to fit Dodge trucks with factory holes in the bed
- |         |   |          |
|---------|---|----------|
| HG30154 | 20K adapter to standard 5 <sup>th</sup> wheel rails, 5,000 PW | \$599.95 |
|---------|---|----------|

## Short Bed 5<sup>th</sup> Wheels



HG16688

**Free Shipping!**  
(zones A, B, C)



HGT3670

**Free LTL shipping!**  
(see pg. 166)

- Designed to fit Dodge trucks with factory holes in the bed
- HG16688: 3 height adjustments from 19" to 23"
- HGT3670: 3 height adjustments from 17" to 19"

HG16688	24K CURT 5 <sup>th</sup> wheel roller, 6,000 PW	\$1,879.00
HGT3670	20K B&W Companion™ 5 <sup>th</sup> wheel slider, 5,000 PW	\$1,699.00

## Ball Kits



HG30032

HG30012

HG30062

- Designed to fit Dodge trucks with factory holes in the bed
- HG30062: Handle keeps hands clean and serves as ball latch
- HG30032: Built-in hydraulic tongue weight scale

HG30012	30K CURT ball kit	\$251.95
HG30018	38K CURT ball kit	\$271.95
HG30062	30K B&W ball kit	\$299.00
HG30032	30K WeighSafe ball kit	\$299.00
HG30013	Pair of CURT safety chain attachments	\$89.95



# Chevy & Nissan OEM-Compatible Options

## 5<sup>th</sup> Wheels



HGT3705



HG16070



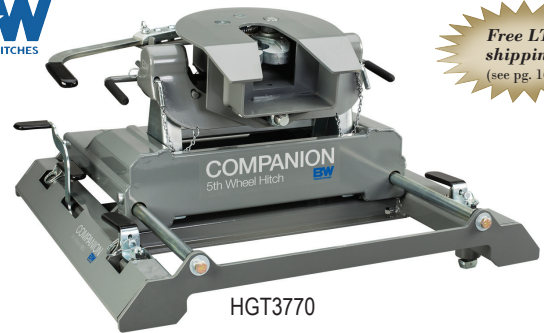
- Designed to fit Chevy/GMC trucks with factory holes in the bed
- CURT models: 3 height adjustments from 13" to 17"
- B&W models: 3 height adjustments from 16¾" to 18¾"
- HG30895: 3 height adjustments from 14" to 18"
- For Nissan applications, see pg. #122

16-19 Pickups			
HG16069	25K CURT 5 <sup>th</sup> wheel	6,250 PW	\$1,202.95
HGT3700	20K B&W Companion 5 <sup>th</sup> wheel	5,000 PW	\$1,199.00
HGT3705	25K B&W Companion 5 <sup>th</sup> wheel	6,250 PW	\$1,399.00
HG30895	27K REESE M5™ 5 <sup>th</sup> wheel	6,750 PW	\$1,490.00
20-21 Pickups			
HGT3710	20K B&W Companion 5 <sup>th</sup> wheel	5,000 PW	\$1,199.00
HGT3715	25K B&W Companion 5 <sup>th</sup> wheel	6,250 PW	\$1,399.00
HG16070	30K CURT 5 <sup>th</sup> wheel	7,500 PW	\$1,533.95

## Short Bed 5<sup>th</sup> Wheels



HG16671



HGT3770



- Designed to fit Chevy/GMC trucks with factory holes in the bed
- HG16671: 3 height adjustments from 19" to 23"
- B&W models: 3 height adjustments from 16¾" to 18¾"

16-19 Pickups			
HG16671	20K CURT 5 <sup>th</sup> wheel roller	5,000 PW	\$1,695.00
HGT3770	20K B&W Companion slider	5,000 PW	\$1,699.00
20-21 Pickups			
HGT3775	20K B&W Companion slider	5,000 PW	\$1,699.00

## Chevy/GMC & Nissan Ball Kits



HG30061



HG30010



New!

HG30031



- Fits Chevy/GMC & Nissan trucks with factory holes in the bed
- HG30061: Handle keeps hands clean and serves as ball latch
- HG30031: Built-in hydraulic tongue weight scale

HG30010	30K CURT ball kit	\$239.95
HG30016	38K CURT ball kit	\$259.95
HG30061	30K B&W ball kit	\$299.00
HG30031	30K WeighSafe ball kit	\$299.00

## Puck to Standard Bed Rail Adapters



- Designed to fit Chevy/ GMC truck with factory holes in bed
- Provides industry-standard rails accepting most 5th wheel hitches
- Not compatible with B&W Patriot slider fifth wheels

17-19 Pickups (with 5th wheel prep package)			
HG16050	30K adapter	7,500 PW	\$449.95
20-22 Pickups (with 5th wheel prep package)			
HG16027	25K adapter	6,250 PW	\$424.95

# King Pins & Adapters



## Kingpin



Standard 2" SAE kingpin.  $\frac{3}{8}$ " bolster plate not included. Must be preheated and welded by experienced professional welder.

HGK Kingpin \$78.95

## King Pin to Gooseneck Adapter



HGKA



HGKA2

- Standard 2" king pin on bottom side with  $2\frac{5}{16}$ " ball on the top side
- HGKA: One-piece forged design: 30,000 GTW
- HGKA2: Zinc, welded design, zinc plated: 30,000 GTW
- See electrical section for 7-pin adapters

HGKA	King pin to gooseneck adapter	\$219.95
HGKA2	Zinc king pin to gooseneck adapter	\$195.95

## Kingpin Adapters



HGN5



HGN6

- 10" round bolster plate
- 30,000 GTW
- Use the kingpin adapter in place of your gooseneck coupler

HGN5	4" round pipe	$\frac{7}{8}$ " pin holes	\$308.00
HGN7	4" square tube	1" pin holes	\$308.00
HGN6	4½" square tube	1½" pin holes	\$314.00

Kingpin adapters are available in offset models. Call for more information.

## Cushioned 5<sup>th</sup> Wheel Adapters



HCGA1216



HCGOA1216

- Fits all standard kingpins.
- Includes safety chains
- Attaches to kingpin on trailer and adapts to gooseneck ball on truck
- Polypropylene cushions cover bumps and jars for a smoother ride
- Height is measured from top of ball to base of king pin.
- Adapter must be bolted to king pin box (Optional for HCGA1216)
- King pin box must be strong enough to handle extra leverage.
- May void trailer warranty.

HCGA1216	12-16" adjustable height 20,000 GTW/4,000 TW	\$549.95
HCGOA1216	7½" offset, 12-16" adjustable height 20,000 GTW/2,000 TW	\$709.95

## King Pin Lock



- Rugged ultra tough alloy construction
- Security for unattended trailers
- Fits standard 2" SAE kingpins.

HALKP60 Heavy Duty King Pin lock \$45.95

## Nissan OEM-compatible 5<sup>th</sup> Wheel



- Designed to fit Nissan trucks with 3 factory holes in the bed
- HG16075: 3 height adjustments from 13" to 17"

HG16075 20K CURT 5<sup>th</sup> wheel 5,000 PW \$1292.95



# Kingpin Adapters & Gooseneck Couplers

## Goose Coupler Adapter



- Say "NO" to bolt-on or clamp-on 5th wheel adapters
- Replaces existing king pin box on your RV
- Allows for 4" height adjustment at coupler
- Always check trailer weight capacity before installing Goosebox
- Rated at 24,000 lb/ 6500 TW
- Limited Lifetime Warranty
- HG94602 fits Lippert #1621 & 0719 wing sets
- HG94601 fits Lippert #1716, 1116 & 0115

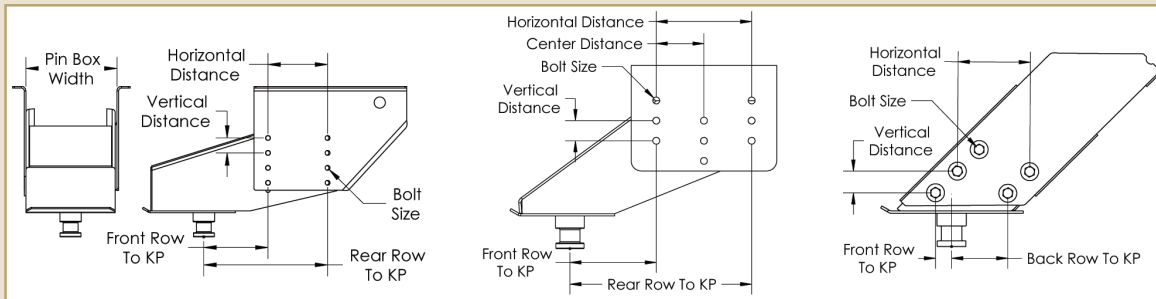
HG94602	Goosebox Adapter	\$954.00
HG94601	Goosebox Adapter (Allow 1-2 wks for delivery)	\$954.00
HG94609	Accessory safety chain kit (Allow 1-2 wks for delivery)	\$186.00

## Goose Box Adapter



- Endorsed by Lippert Components, Inc. for their frame systems
- Air bag, dual shocks and rubber bumpers provide multi-directional shock absorption for a smoother driving experience
- Fits Lippert #1621, #0179, and #1716\* and other wing sets
- Air pressure relief valve prevents overfilling of air bags
- Always check trailer weight capacity before installing Goose Box
- Limited Lifetime warranty

HG94716	16K Goosebox, 3,200 pin weight	\$1649.00
HG94720	20K Goosebox, 4,000 pin weight	\$1959.00
HG94629	16K safety chain kit	\$74.95
HG94628	20K safety chain kit	\$89.95
HG94619	*Goosebox spacer needed for Lippert 1716,1116,0115	\$59.95



### Determining the pin box model on your camper

1. Look on the pin box to locate the manufacturer's name & part #
2. Or call the RV manufacturer with the last 6 digits of the serial #
3. Or take measurements as illustrated and call us

## Gen-Y SPARTAN Torsion Coupler



## Cushioned Gooseneck Couplers



- 4" round pipe
- TCG266-Cushions up, down, and 360°. Takes the shake, rattle, and roll out of gooseneck towing. Has ball guides for easy hookup
- TCG267-Single cushion for more stability, lifetime warranty on cushion, self-latching coupler, provided cable allows you to unlatch without entering your truck bed. Drilled tube to allow use of thru-pin.

TCG266	Rubberneck™ Coupler, 30,000 GTW	\$281.95
TCG267	Cushion Coupler, 30,000 GTW	\$1017.00

- Auto-latching coupler
- TCG7062S & 7072S Optimum ride between 4,000-5,500 TW
- Best cushion gooseneck ride available
- Uses rubber torsion technology similar to torsion trailer axles
- 100% Satisfaction Guaranteed!
- 5-year torsion warranty; Lifetime workmanship warranty!

TCG7062S	4" Round tube	25,000 GTW, 5,500TW	\$1146.99
TCG7072S	4" Square tube	25,000 GTW, 5,500 TW	\$1146.99
TCG7092S	4" Square tube	30,000 GTW, 7,000 TW	\$1203.99

## 4" Round Gooseneck Couplers



TCG222

TCG224

TCG226

•TCG226: Cone-shaped latch plate guides trailer onto ball

ITEM#	Capacity	Height Adj.	Mounting Sleeve	Through Hole	Price
TCG222	20K	8"	Y	N	\$172.95
TCG224	25K	8"	Y	Y	\$193.95
TCG226	30K	8"	Y	Y	\$234.95

## Square Gooseneck Couplers



TCG435

TCG627

HGN2

TCG435 / TCG627: Cone-shaped latch plate guides trailer onto ball even if truck is not in exact position.

TCG435	25K, 4" square, lockable	\$223.95
TCG627	30K, 4½" square (O.D. of outer tube)	\$377.95
HGN2	28K, 4½" square lockable auto-latch	\$349.00

Dexter Custom-Ordered  
Spring & Torsion Axles  
See page 52



## Offset Couplers



HGSB042



HGSB104



HGSB116

•Adds clearance between truck and trailer for short bed trucks

•Rated to 24,000 GTW and 6,000 TW

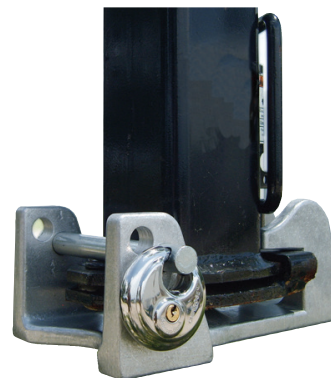
•Lockable with your padlock

•HGSB042: B&W brand, self-aligning, cone-shaped coupler

•PopUp brand: Self-latching coupler, includes release cable and hardware

HGSB042	10" offset 4" round tube	\$399.00
HGSB104	9" offset 4" round tube 4" longer lower tube	\$554.00
HGSB200	9" offset 4½" square tube	\$524.00
HGSB300	9" offset 4" square tube	\$554.00
HGSB116	16" offset 4" round tube	\$645.00
HGSB216	16" offset 4½" square tube	\$648.00
HGSB316	16" offset 4" square tube	\$645.00

## Gooseneck Coupler Locks



HALEZ50



HALEZ51



HALEZ45

•HALEZ50 Fits TCG222/224/627 well. Not compatible with cushioned, Gen-Y, offset, or auto-latching couplers. Secure with our padlock HALEZ45.

•HALEZ51- Secure the height adjustment set screw on all round and square tube gooseneck couplers. Secure with our padlock HALEZ45

HALEZ50	Gooseneck coupler lock	\$66.95
HALEZ51	Gooseneck coupler adjustment lock	\$45.95
HALEZ53	HALEZ50 & HALEZ51 with two padlocks	\$124.95
HALEZ45	Stainless Steel Disc Padlock, not keyed alike	\$13.95
HALEZ47	Stainless Steel Disc Padlock, Keyed Alike!	\$22.95